

A15217

Leader in Biomolecular Solutions for Life Science



## NAIF1 Rabbit pAb

Catalog No.: A15217

### Basic Information

**Observed MW**

35kDa

**Calculated MW**

35kDa

**Category**

Polyclonal Antibody

**Applications**

WB, ELISA

**Cross-Reactivity**

Human, Mouse, Rat

### Background

Involved in negative regulation of cell growth and regulation of mitochondrial membrane permeability involved in apoptotic process. Located in cytosol; nucleoplasm; and plasma membrane.

### Recommended Dilutions

WB 1:500 - 1:2000

### Immunogen Information

**Gene ID**

203245

**Swiss Prot**

Q69Y17

**Immunogen**

Recombinant fusion protein containing a sequence corresponding to amino acids 1-110 of human NAIF1 (NP\_931045.1).

**Synonyms**

C9orf90; bA379C10.2; NAIF1

### Contact



[www.abclonal.com](http://www.abclonal.com)

### Product Information

**Source**

Rabbit

**Isotype**

IgG

**Purification**

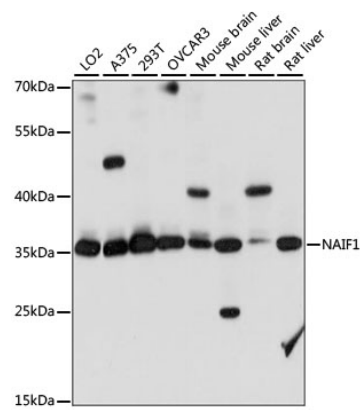
Affinity purification

**Storage**

Store at -20°C. Avoid freeze / thaw cycles.

Buffer: PBS with 0.01% thimerosal, 50% glycerol, pH7.3.

Validation Data



Western blot analysis of various lysates using NAIF1 Rabbit pAb (A15217) at 1:1000 dilution.  
Secondary antibody: HRP Goat Anti-Rabbit IgG (H+L) (AS014) at 1:10000 dilution.  
Lysates/proteins: 25µg per lane.  
Blocking buffer: 3% nonfat dry milk in TBST.  
Detection: ECL Basic Kit (RM00020).  
Exposure time: 10S.