

A15207

Leader in Biomolecular Solutions for Life Science



PLD4 Rabbit pAb

Catalog No.: A15207

Basic Information

Observed MW

64kDa

Calculated MW

56kDa

Category

Polyclonal Antibody

Applications

WB, ELISA

Cross-Reactivity

Human, Rat

Background

Predicted to enable single-stranded DNA 5'-3' exodeoxyribonuclease activity. Predicted to be involved in hematopoietic progenitor cell differentiation; phagocytosis; and regulation of cytokine production involved in inflammatory response. Predicted to be located in early endosome and endoplasmic reticulum membrane. Predicted to be active in several cellular components, including endoplasmic reticulum; phagocytic vesicle; and trans-Golgi network membrane.

Recommended Dilutions

WB 1:500 - 1:2000

ELISA Recommended starting concentration is 1 µg/mL. Please optimize the concentration based on your specific assay requirements.

Immunogen Information

Gene ID

122618

Swiss Prot

Q96BZ4

Immunogen

Recombinant protein (or fragment). This information is considered to be commercially sensitive.

Synonyms

C14orf175; PLD4

Contact

 www.abclonal.com

Product Information

Source

Rabbit

Isotype

IgG

Purification

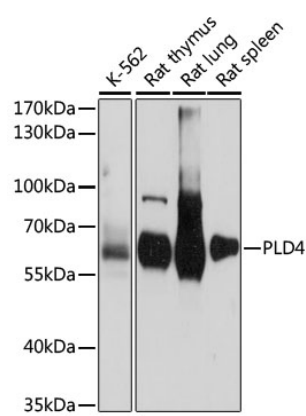
Affinity purification

Storage

Store at -20°C. Avoid freeze / thaw cycles.

Buffer: PBS with 0.01% thimerosal, 50% glycerol, pH 7.3.

Validation Data



Western blot analysis of various lysates using PLD4 Rabbit pAb (A15207) at 1:1000 dilution.
Secondary antibody: HRP-conjugated Goat anti-Rabbit IgG (H+L) (AS014) at 1:10000 dilution.
Lysates/proteins: 25µg per lane.
Blocking buffer: 3% nonfat dry milk in TBST.
Detection: ECL Basic Kit (RM00020).
Exposure time: 15s.