

A15204

Leader in Biomolecular Solutions for Life Science



# CHRDL1 Rabbit pAb

Catalog No.: A15204

## Basic Information

---

### Observed MW

51kDa

### Calculated MW

52kDa

### Category

Polyclonal Antibody

### Applications

WB,ELISA

### Cross-Reactivity

Human,Mouse

## Background

---

This gene encodes an antagonist of bone morphogenetic protein 4. The encoded protein may play a role in topographic retinotectal projection and in the regulation of retinal angiogenesis in response to hypoxia. Alternatively spliced transcript variants encoding different isoforms have been described.

## Recommended Dilutions

---

WB 1:500 - 1:2000

## Immunogen Information

---

### Gene ID

91851

### Swiss Prot

Q9BU40

### Immunogen

Recombinant fusion protein containing a sequence corresponding to amino acids 289-458 of human CHRDL1 (NP\_001137453.1).

### Synonyms

CHL; MGC1; MGCN; VOPT; NRLN1; dA141H5.1; CHRDL1

## Contact

---



[www.abclonal.com](http://www.abclonal.com)

## Product Information

---

### Source

Rabbit

### Isotype

IgG

### Purification

Affinity purification

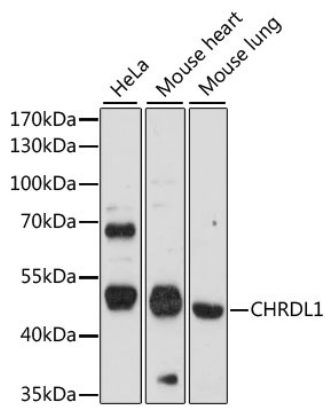
### Storage

Store at -20°C. Avoid freeze / thaw cycles.

Buffer: PBS with 0.01% thimerosal,50% glycerol,pH7.3.

## Validation Data

---



Western blot analysis of various lysates using CHRDL1 Rabbit pAb (A15204) at 1:1000 dilution.  
Secondary antibody: HRP Goat Anti-Rabbit IgG (H+L) (AS014) at 1:10000 dilution.  
Lysates/proteins: 25 $\mu$ g per lane.  
Blocking buffer: 3% nonfat dry milk in TBST.  
Detection: ECL Basic Kit (RM00020).  
Exposure time: 90s.