

A15178

Leader in Biomolecular Solutions for Life Science



SLC44A2 Rabbit pAb

Catalog No.: A15178

Basic Information

Observed MW

90kDa

Calculated MW

80kDa

Category

Polyclonal Antibody

Applications

WB,ELISA

Cross-Reactivity

Human,Mouse,Rat

Background

Enables choline transmembrane transporter activity. Involved in choline transport and transmembrane transport. Located in mitochondrion and plasma membrane.

Recommended Dilutions

WB 1:500 - 1:2000

ELISA Recommended starting concentration is 1 µg/mL. Please optimize the concentration based on your specific assay requirements.

Immunogen Information

Gene ID

57153

Swiss Prot

Q8IWA5

Immunogen

A synthetic peptide corresponding to a sequence within amino acids 150-250 of human SLC44A2 (NP_065161.3).

Synonyms

CTL2; PP1292; SLC44A2

Contact

 www.abclonal.com

Product Information

Source

Rabbit

Isotype

IgG

Purification

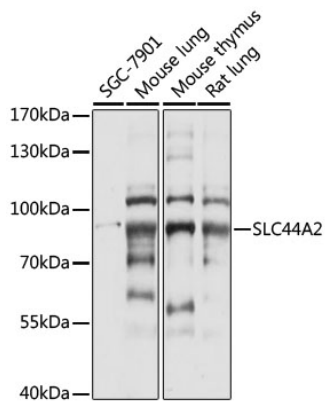
Affinity purification

Storage

Store at -20°C. Avoid freeze / thaw cycles.

Buffer: PBS with 0.01% thimerosal,50% glycerol,pH7.3.

Validation Data



Western blot analysis of various lysates using SLC44A2 Rabbit pAb (A15178) at 1:1000 dilution.

Secondary antibody: HRP-conjugated Goat anti-Rabbit IgG (H+L) (AS014) at 1:10000 dilution.

Lysates/proteins: 25 μ g per lane.

Blocking buffer: 3% nonfat dry milk in TBST.

Detection: ECL Basic Kit (RM00020).

Exposure time: 5s.