

A15170

Leader in Biomolecular Solutions for Life Science



## PRR5 Rabbit pAb

Catalog No.: A15170

### Basic Information

#### Observed MW

45kDa

#### Calculated MW

43kDa

#### Category

Polyclonal Antibody

#### Applications

WB,IF/ICC,ELISA

#### Cross-Reactivity

Human,Mouse,Rat

### Background

This gene encodes a protein with a proline-rich domain. This gene is located in a region of chromosome 22 reported to contain a tumor suppressor gene that may be involved in breast and colorectal tumorigenesis. The protein is a component of the mammalian target of rapamycin complex 2 (mTORC2), and it regulates platelet-derived growth factor (PDGF) receptor beta expression and PDGF signaling to Akt and S6K1. Alternative splicing and the use of alternative promoters results in transcripts encoding different isoforms. Read-through transcripts from this gene into the downstream Rho GTPase activating protein 8 (ARHGAP8) gene also exist, which led to the original description of PRR5 and ARHGAP8 being a single gene.

### Recommended Dilutions

**WB** 1:500 - 1:1000

**IF/ICC** 1:50 - 1:200

**ELISA** Recommended starting concentration is 1 µg/mL. Please optimize the concentration based on your specific assay requirements.

### Immunogen Information

#### Gene ID

55615

#### Swiss Prot

P85299

#### Immunogen

Recombinant fusion protein containing a sequence corresponding to amino acids 190-388 of human PRR5 (NP\_851850.1).

#### Synonyms

PP610; PROTOR1; PROTOR-1; FLJ20185k; PRR5

### Contact



[www.abclonal.com](http://www.abclonal.com)

### Product Information

#### Source

Rabbit

#### Isotype

IgG

#### Purification

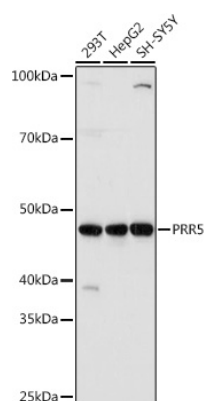
Affinity purification

#### Storage

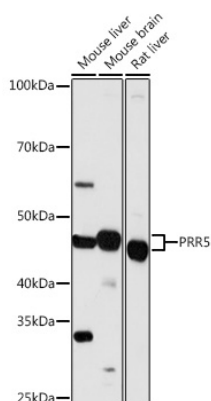
Store at -20°C. Avoid freeze / thaw cycles.

Buffer: PBS with 0.01% thimerosal, 50% glycerol, pH7.3.

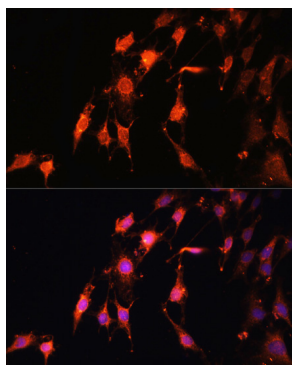
## Validation Data



Western blot analysis of various lysates using PRR5 Rabbit pAb (A15170) at 1:1000 dilution.  
 Secondary antibody: HRP-conjugated Goat anti-Rabbit IgG (H+L) (AS014) at 1:10000 dilution.  
 Lysates/proteins: 25µg per lane.  
 Blocking buffer: 3% nonfat dry milk in TBST.  
 Detection: ECL Basic Kit (RM00020).  
 Exposure time: 3s.



Western blot analysis of various lysates using PRR5 Rabbit pAb (A15170) at 1:1000 dilution.  
 Secondary antibody: HRP-conjugated Goat anti-Rabbit IgG (H+L) (AS014) at 1:10000 dilution.  
 Lysates/proteins: 25µg per lane.  
 Blocking buffer: 3% nonfat dry milk in TBST.  
 Detection: ECL Basic Kit (RM00020).  
 Exposure time: 30s.



Immunofluorescence analysis of C6 cells using PRR5 Rabbit pAb (A15170) at dilution of 1:100.  
 Secondary antibody: Cy3-conjugated Goat anti-Rabbit IgG (H+L) (AS007) at 1:500 dilution. Blue: DAPI for nuclear staining.