

A15152

Leader in Biomolecular Solutions for Life Science



FOXB1 Rabbit pAb

Catalog No.: A15152

Basic Information

Observed MW

35kDa

Calculated MW

35kDa

Category

Polyclonal Antibody

Applications

WB,ELISA

Cross-Reactivity

Human

Background

Enables sequence-specific double-stranded DNA binding activity. Predicted to be involved in several processes, including mammary gland development; nervous system development; and visual learning. Predicted to act upstream of or within spinal cord development; thalamus development; and urogenital system development. Predicted to be located in nucleus. Predicted to be part of chromatin.

Recommended Dilutions

WB 1:500 - 1:2000

ELISA Recommended starting concentration is 1 µg/mL. Please optimize the concentration based on your specific assay requirements.

Immunogen Information

Gene ID

27023

Swiss Prot

Q99853

Immunogen

Synthetic peptide. This information is considered to be commercially sensitive.

Synonyms

FKH5; HFKH-5; FOXB1

Contact

 www.abclonal.com

Product Information

Source

Rabbit

Isotype

IgG

Purification

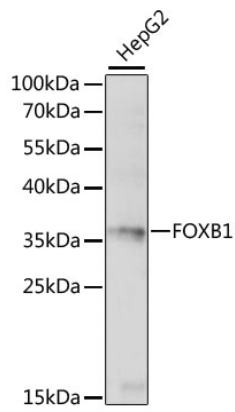
Affinity purification

Storage

Store at -20°C. Avoid freeze / thaw cycles.

Buffer: PBS with 0.01% thimerosal, 50% glycerol, pH7.3.

Validation Data



Western blot analysis of lysates from HepG2 cells, using FOXB1 Rabbit pAb (A15152) at 1:1000 dilution.

Secondary antibody: HRP-conjugated Goat anti-Rabbit IgG (H+L) (AS014) at 1:10000 dilution.

Lysates/proteins: 25 μ g per lane.

Blocking buffer: 3% nonfat dry milk in TBST.

Detection: ECL Basic Kit (RM00020).

Exposure time: 30s.