

A15118

Leader in Biomolecular Solutions for Life Science



KSR1 Rabbit pAb

Catalog No.: A15118

Basic Information

Observed MW

110kDa

Calculated MW

102kDa

Category

Polyclonal Antibody

Applications

WB,IF/ICC,ELISA

Cross-Reactivity

Human,Mouse,Rat

Background

Enables 14-3-3 protein binding activity; ATP binding activity; and protein C-terminus binding activity. Involved in positive regulation of MAPK cascade. Located in endoplasmic reticulum and membrane. Part of protein-containing complex. Implicated in breast adenocarcinoma. Biomarker of breast cancer.

Recommended Dilutions

WB 1:500 - 1:2000

IF/ICC 1:50 - 1:100

Immunogen Information

Gene ID

8844

Swiss Prot

Q8IVT5

Immunogen

Recombinant fusion protein containing a sequence corresponding to amino acids 320-420 of human KSR1 (NP_055053.1).

Synonyms

KSR; RSU2; KSR1

Contact

 www.abclonal.com

Product Information

Source

Rabbit

Isotype

IgG

Purification

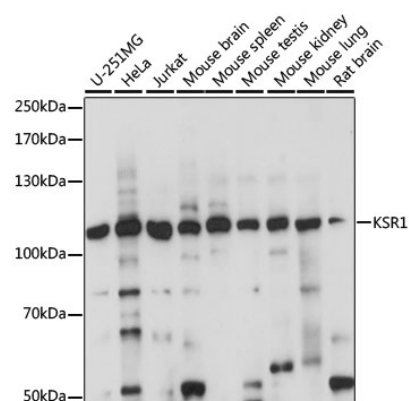
Affinity purification

Storage

Store at -20°C. Avoid freeze / thaw cycles.

Buffer: PBS with 0.01% thimerosal, 50% glycerol, pH7.3.

Validation Data



Western blot analysis of various lysates using KSR1 Rabbit pAb (A15118) at 1:1000 dilution.

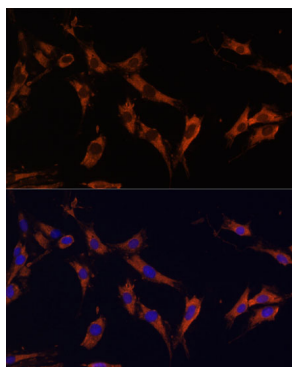
Secondary antibody: HRP Goat Anti-Rabbit IgG (H+L) (AS014) at 1:10000 dilution.

Lysates/proteins: 25µg per lane.

Blocking buffer: 3% nonfat dry milk in TBST.

Detection: ECL Basic Kit (RM00020).

Exposure time: 10s.



Immunofluorescence analysis of C6 cells using KSR1 Rabbit pAb (A15118) at dilution of 1:100 (40x lens). Secondary antibody: Cy3 Goat Anti-Rabbit IgG (H+L) (AS007) at 1:500 dilution. Blue: DAPI for nuclear staining.