

A15092

Leader in Biomolecular Solutions for Life Science



www.abclonal.com

# RHD Rabbit pAb

Catalog No.: A15092

1 Publications

## Basic Information

### Observed MW

36kDa

### Calculated MW

45kDa

### Category

Polyclonal Antibody

### Applications

WB,ELISA

### Cross-Reactivity

Mouse,Rat

## Background

The Rh blood group system is the second most clinically significant of the blood groups, second only to ABO. It is also the most polymorphic of the blood groups, with variations due to deletions, gene conversions, and missense mutations. The Rh blood group includes this gene, which encodes the RhD protein, and a second gene that encodes both the RhC and RhE antigens on a single polypeptide. The two genes, and a third unrelated gene, are found in a cluster on chromosome 1. The classification of Rh-positive and Rh-negative individuals is determined by the presence or absence of the highly immunogenic RhD protein on the surface of erythrocytes. Multiple transcript variants encoding different isoforms have been found for this gene.

## Recommended Dilutions

**WB** 1:500 - 1:2000

**ELISA** Recommended starting concentration is 1 µg/mL. Please optimize the concentration based on your specific assay requirements.

## Immunogen Information

### Gene ID

6007

### Swiss Prot

Q02161

### Immunogen

Synthetic peptide. This information is considered to be commercially sensitive.

### Synonyms

RH; Rh4; RH30; RhII; RhPI; DIIIc; RHCED; RHDel; RHPPI; RhDCw; CD240D; HDFNRH; RHXIII; RHDVA(TT); RhK562-II; RHD

## Contact



[www.abclonal.com](http://www.abclonal.com)

## Product Information

### Source

Rabbit

### Isotype

IgG

### Purification

Affinity purification

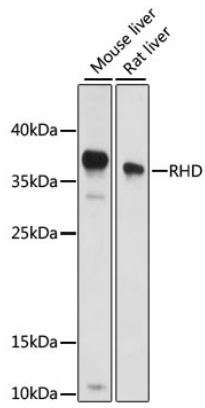
### Storage

Store at -20°C. Avoid freeze / thaw cycles.

Buffer: PBS with 0.01% thimerosal, 50% glycerol, pH7.3.

## Validation Data

---



Western blot analysis of various lysates using RHD Rabbit pAb (A15092) at 1:1000 dilution.

Secondary antibody: HRP-conjugated Goat anti-Rabbit IgG (H+L) (AS014) at 1:10000 dilution.

Lysates/proteins: 25 $\mu$ g per lane.

Blocking buffer: 3% nonfat dry milk in TBST.

Detection: ECL Basic Kit (RM00020).

Exposure time: 15s.