

A15030

Leader in Biomolecular Solutions for Life Science



# Aquaporin-1 (AQP1) Rabbit pAb

Catalog No.: A15030

6 Publications

## Basic Information

### Observed MW

25kDa

### Calculated MW

29kDa

### Category

Polyclonal Antibody

### Applications

WB,IHC-P,ELISA,IF-P

### Cross-Reactivity

Human,Mouse,Rat

## Background

This gene encodes a small integral membrane protein with six bilayer spanning domains that functions as a water channel protein. This protein permits passive transport of water along an osmotic gradient. This gene is a possible candidate for disorders involving imbalance in ocular fluid movement.

## Recommended Dilutions

**WB** 1:100 - 1:500

**IF-P** 1:50 - 1:200

**IHC-P** 1:50 - 1:200

**ELISA** Recommended starting concentration is 1 µg/mL. Please optimize the concentration based on your specific assay requirements.

## Immunogen Information

### Gene ID

358

### Swiss Prot

P29972

### Immunogen

Synthetic peptide. This information is considered to be commercially sensitive.

### Synonyms

CO; CHIP28; AQP-CHIP; Aquaporin-1 (AQP1)

## Product Information

### Source

Rabbit

### Isotype

IgG

### Purification

Affinity purification

### Storage

Store at -20°C. Avoid freeze / thaw cycles.

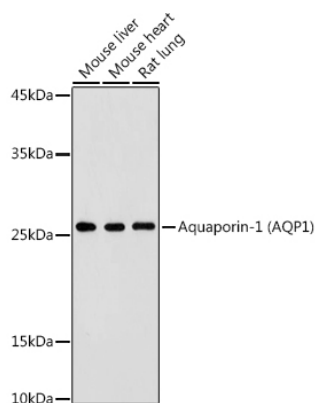
Buffer: PBS containing 50% glycerol, preserved with proclin300 or sodium azide (as specified on the Certificate of Analysis), pH 7.3.

## Contact



[www.abclonal.com](http://www.abclonal.com)

## Validation Data



Western blot analysis of various lysates using Aquaporin-1 (AQP1) Rabbit pAb (A15030) at 1:500 dilution.

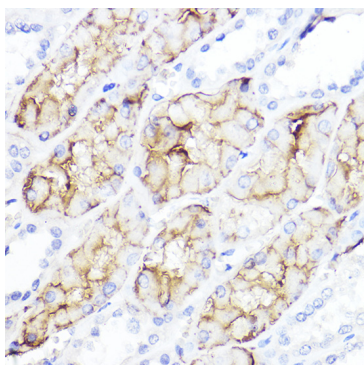
Secondary antibody: HRP-conjugated Goat anti-Rabbit IgG (H+L) (AS014) at 1:10000 dilution.

Lysates/proteins: 25µg per lane.

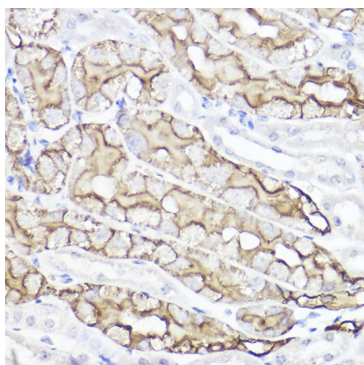
Blocking buffer: 3% nonfat dry milk in TBST.

Detection: ECL Basic Kit (RM00020).

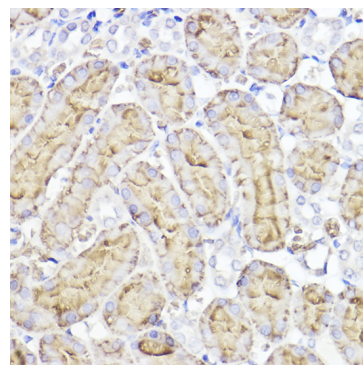
Exposure time: 180s.



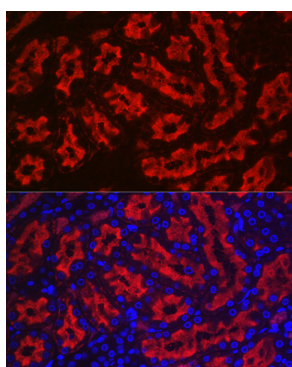
Immunohistochemistry analysis of paraffin-embedded Human kidney using Aquaporin-1 (AQP1) Rabbit pAb (A15030) at dilution of 1:100 (40x lens). High pressure antigen retrieval performed with 0.01M Citrate buffer (pH 6.0) prior to IHC staining.



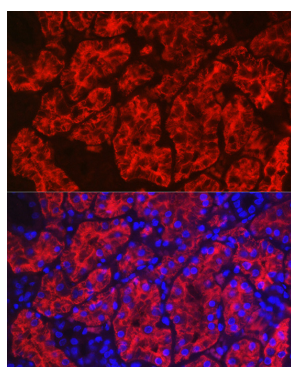
Immunohistochemistry analysis of paraffin-embedded Mouse kidney using Aquaporin-1 (AQP1) Rabbit pAb (A15030) at dilution of 1:100 (40x lens). High pressure antigen retrieval performed with 0.01M Citrate buffer (pH 6.0) prior to IHC staining.



Immunohistochemistry analysis of paraffin-embedded Rat kidney using Aquaporin-1 (AQP1) Rabbit pAb (A15030) at dilution of 1:100 (40x lens). High pressure antigen retrieval performed with 0.01M Citrate buffer (pH 6.0) prior to IHC staining.



Immunofluorescence analysis of paraffin-embedded rat kidney using Aquaporin-1 (AQP1) Rabbit pAb (A15030) at dilution of 1:100 (40x lens). Secondary antibody: Cy3-conjugated Goat anti-Rabbit IgG (H+L) (AS007) at 1:500 dilution. Blue: DAPI for nuclear staining.



Immunofluorescence analysis of paraffin-embedded human kidney using Aquaporin-1 (AQP1) Rabbit pAb (A15030) at dilution of 1:100 (40x lens). Secondary antibody: Cy3-conjugated Goat anti-Rabbit IgG (H+L) (AS007) at 1:500 dilution. Blue: DAPI for nuclear staining.