

A14984

Leader in Biomolecular Solutions for Life Science



ASTL Rabbit pAb

Catalog No.: A14984

Basic Information

Observed MW

46kDa

Calculated MW

46kDa

Category

Polyclonal Antibody

Applications

WB,ELISA

Cross-Reactivity

Human

Background

Predicted to enable aspartic-type peptidase activity; glutamic-type peptidase activity; and metalloendopeptidase activity. Predicted to be involved in several processes, including negative regulation of binding activity of sperm to zona pellucida; positive regulation of protein processing; and prevention of polyspermy. Predicted to be located in cortical granule and plasma membrane.

Recommended Dilutions

WB 1:500 - 1:2000

ELISA Recommended starting concentration is 1 µg/mL. Please optimize the concentration based on your specific assay requirements.

Immunogen Information

Gene ID

431705

Swiss Prot

Q6HA08

Immunogen

Recombinant protein (or fragment). This information is considered to be commercially sensitive.

Synonyms

SAS1B; OOMD11; OZEMA11; ASTL

Contact



www.abclonal.com

Product Information

Source

Rabbit

Isotype

IgG

Purification

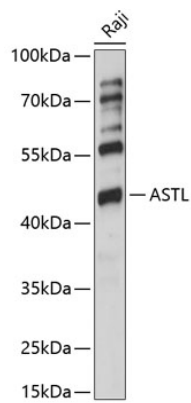
Affinity purification

Storage

Store at -20°C. Avoid freeze / thaw cycles.

Buffer: PBS with 0.01% thimerosal, 50% glycerol, pH7.3.

Validation Data



Western blot analysis of lysates from Raji cells, using ASTL Rabbit pAb (A14984) at 1:1000 dilution.

Secondary antibody: HRP-conjugated Goat anti-Rabbit IgG (H+L) (AS014) at 1:10000 dilution.

Lysates/proteins: 25µg per lane.

Blocking buffer: 3% nonfat dry milk in TBST.

Detection: ECL Basic Kit (RM00020).

Exposure time: 60s.