

A14968

Leader in Biomolecular Solutions for Life Science



LINGO2 Rabbit pAb

Catalog No.: A14968

Basic Information

Observed MW

72kDa

Calculated MW

68kDa

Category

Polyclonal Antibody

Applications

WB,ELISA

Cross-Reactivity

Human,Mouse,Rat

Background

Predicted to act upstream of or within positive regulation of synapse assembly. Predicted to be integral component of membrane. Predicted to be active in extracellular matrix and extracellular space.

Recommended Dilutions

WB 1:500 - 1:2000

ELISA Recommended starting concentration is 1 µg/mL. Please optimize the concentration based on your specific assay requirements.

Immunogen Information

Gene ID

158038

Swiss Prot

Q7L985

Immunogen

Recombinant protein (or fragment). This information is considered to be commercially sensitive.

Synonyms

LERN3; LRRN6C; LINGO2

Contact

 www.abclonal.com

Product Information

Source

Rabbit

Isotype

IgG

Purification

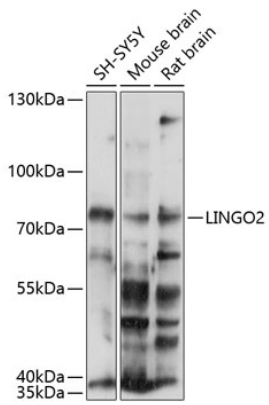
Affinity purification

Storage

Store at -20°C. Avoid freeze / thaw cycles.

Buffer: PBS with 0.01% thimerosal, 50% glycerol, pH7.3.

Validation Data



Western blot analysis of various lysates using LINGO2 Rabbit pAb (A14968) at 1:1000 dilution.

Secondary antibody: HRP-conjugated Goat anti-Rabbit IgG (H+L) (AS014) at 1:10000 dilution.

Lysates/proteins: 25 μ g per lane.

Blocking buffer: 3% nonfat dry milk in TBST.

Detection: ECL Basic Kit (RM00020).

Exposure time: 60s.