

A14954

Leader in Biomolecular Solutions for Life Science



## PKD1L2 Rabbit pAb

Catalog No.: A14954

### Basic Information

#### Observed MW

33kDa

#### Calculated MW

273kDa

#### Category

Polyclonal Antibody

#### Applications

WB, ELISA

#### Cross-Reactivity

Mouse

### Background

This gene encodes a member of the polycystin protein family. This protein may function as a G-protein-coupled component or regulator of cation channel pores. The long isoform of this protein contains 11 transmembrane domains, a latrophilin/CL-1-like GPCR proteolytic site (GPS) domain, and a polycystin-1, lipoxygenase, alpha-toxin (PLAT) domain. Alternative splicing results in multiple transcript variants encoding distinct isoforms. This gene is a polymorphic pseudogene in humans.

### Recommended Dilutions

WB 1:500 - 1:2000

### Immunogen Information

#### Gene ID

114780

#### Swiss Prot

Q7Z442

#### Immunogen

Recombinant fusion protein containing a sequence corresponding to amino acids 1-306 of human PKD1L2 (NP\_001265352.1).

#### Synonyms

PC1L2; PKD1L2

### Contact



[www.abclonal.com](http://www.abclonal.com)

### Product Information

#### Source

Rabbit

#### Isotype

IgG

#### Purification

Affinity purification

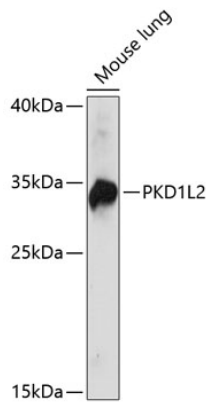
#### Storage

Store at -20°C. Avoid freeze / thaw cycles.

Buffer: PBS with 0.01% thimerosal, 50% glycerol, pH 7.3.

## Validation Data

---



Western blot analysis of lysates from mouse lung, using PKD1L2 Rabbit pAb (A14954) at 1:1000 dilution.  
Secondary antibody: HRP Goat Anti-Rabbit IgG (H+L) (AS014) at 1:10000 dilution.  
Lysates/proteins: 25µg per lane.  
Blocking buffer: 3% nonfat dry milk in TBST.  
Detection: ECL Basic Kit (RM00020).  
Exposure time: 30s.