

A14951

Leader in Biomolecular Solutions for Life Science



ORMDL3 Rabbit pAb

Catalog No.: A14951

1 Publications

Basic Information

Observed MW

17kDa

Calculated MW

17kDa

Category

Polyclonal Antibody

Applications

WB,ELISA

Cross-Reactivity

Human,Mouse

Background

Involved in ceramide metabolic process. Acts upstream of or within several processes, including negative regulation of B cell apoptotic process; negative regulation of ceramide biosynthetic process; and positive regulation of protein localization to nucleus. Located in endoplasmic reticulum. Part of SPOTS complex.

Recommended Dilutions

WB 1:500 - 1:2000

ELISA Recommended starting concentration is 1 µg/mL. Please optimize the concentration based on your specific assay requirements.

Immunogen Information

Gene ID

94103

Swiss Prot

Q8N138

Immunogen

A synthetic peptide corresponding to a sequence within amino acids 1-100 of human ORM DL3 (NP_644809.1).

Synonyms

ORMDL3

Contact



www.abclonal.com

Product Information

Source

Rabbit

Isotype

IgG

Purification

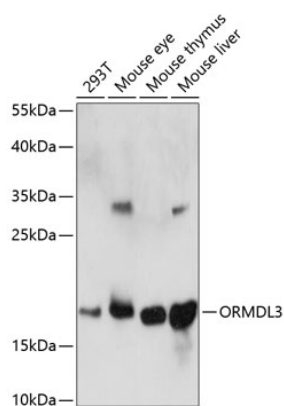
Affinity purification

Storage

Store at -20°C. Avoid freeze / thaw cycles.

Buffer: PBS with 0.01% thimerosal, 50% glycerol, pH7.3.

Validation Data



Western blot analysis of various lysates using ORMDL3 Rabbit pAb (A14951) at 1:1000 dilution.

Secondary antibody: HRP-conjugated Goat anti-Rabbit IgG (H+L) (AS014) at 1:10000 dilution.

Lysates/proteins: 25µg per lane.

Blocking buffer: 3% nonfat dry milk in TBST.

Detection: ECL Enhanced Kit (RM00021).

Exposure time: 60s.