

A14903

Leader in Biomolecular Solutions for Life Science



# LINS1 Rabbit pAb

Catalog No.: A14903

## Basic Information

---

### Observed MW

86kDa

### Calculated MW

55kDa/85kDa

### Category

Polyclonal Antibody

### Applications

WB,ELISA

### Cross-Reactivity

Mouse,Rat

## Background

---

Predicted to be involved in cognition. Human ortholog(s) of this gene implicated in autosomal recessive non-syndromic intellectual disability. Orthologous to human LINS1 (lines homolog 1).

## Recommended Dilutions

---

**WB** 1:500 - 1:2000

**ELISA** Recommended starting concentration is 1 µg/mL. Please optimize the concentration based on your specific assay requirements.

## Immunogen Information

---

### Gene ID

72635

### Swiss Prot

### Immunogen

Synthetic peptide. This information is considered to be commercially sensitive.

### Synonyms

Lins; Lins2; Wins2; 2700083B01Rik; LINS1

## Contact

---

 [www.abclonal.com](http://www.abclonal.com)

## Product Information

---

### Source

Rabbit

### Isotype

IgG

### Purification

Affinity purification

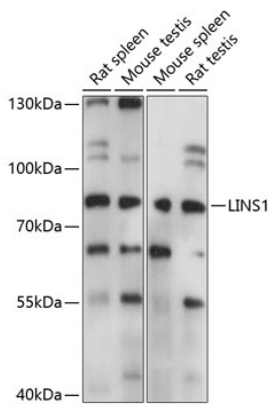
### Storage

Store at -20°C. Avoid freeze / thaw cycles.

Buffer: PBS with 0.01% thimerosal,50% glycerol,pH7.3.

## Validation Data

---



Western blot analysis of various lysates using LINS1 Rabbit pAb (A14903) at 1:1000 dilution.  
Secondary antibody: HRP-conjugated Goat anti-Rabbit IgG (H+L) (AS014) at 1:10000 dilution.  
Lysates/proteins: 25µg per lane.  
Blocking buffer: 3% nonfat dry milk in TBST.  
Detection: ECL Basic Kit (RM00020).  
Exposure time: 1s.