

A14897

Leader in Biomolecular Solutions for Life Science



## GPR173 Rabbit pAb

Catalog No.: A14897

### Basic Information

**Observed MW**

53kDa

**Calculated MW**

41kDa

**Category**

Polyclonal Antibody

**Applications**

WB, ELISA

**Cross-Reactivity**

Human, Mouse

### Background

This gene encodes a member of the G-protein coupled receptor 1 family. This protein contains 7 transmembrane domains and conserved cysteine residues.

### Recommended Dilutions

**WB** 1:500 - 1:2000

### Immunogen Information

**Gene ID**

54328

**Swiss Prot**

Q9NS66

**Immunogen**

Recombinant fusion protein containing a sequence corresponding to amino acids 160-230 of human GPR173 (NP\_061842.1).

**Synonyms**

SREB3; GPR173

### Contact



[www.abclonal.com](http://www.abclonal.com)

### Product Information

**Source**

Rabbit

**Isotype**

IgG

**Purification**

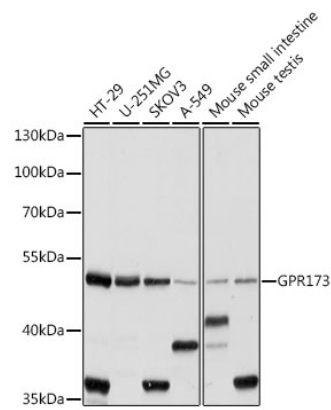
Affinity purification

**Storage**

Store at -20°C. Avoid freeze / thaw cycles.

Buffer: PBS with 0.01% thimerosal, 50% glycerol, pH7.3.

Validation Data



Western blot analysis of various lysates using GPR173 Rabbit pAb (A14897) at 1:1000 dilution.  
Secondary antibody: HRP Goat Anti-Rabbit IgG (H+L) (A5014) at 1:10000 dilution.  
Lysates/proteins: 25µg per lane.  
Blocking buffer: 3% nonfat dry milk in TBST.  
Detection: ECL Basic Kit (RM00020).  
Exposure time: 10s.