

A14828

Leader in Biomolecular Solutions for Life Science



RALGPS1 Rabbit pAb

Catalog No.: A14828

Basic Information

Observed MW

62kDa

Calculated MW

62kDa

Category

Polyclonal Antibody

Applications

WB,ELISA

Cross-Reactivity

Human

Background

Enables guanyl-nucleotide exchange factor activity. Involved in regulation of Ral protein signal transduction. Predicted to be located in cytoplasm and plasma membrane.

Recommended Dilutions

WB 1:500 - 1:2000

ELISA Recommended starting concentration is 1 µg/mL. Please optimize the concentration based on your specific assay requirements.

Immunogen Information

Gene ID

9649

Swiss Prot

Q5JS13

Immunogen

Recombinant protein (or fragment). This information is considered to be commercially sensitive.

Synonyms

RALGEF2; RALGPS1A; RALGPS1

Contact

 www.abclonal.com

Product Information

Source

Rabbit

Isotype

IgG

Purification

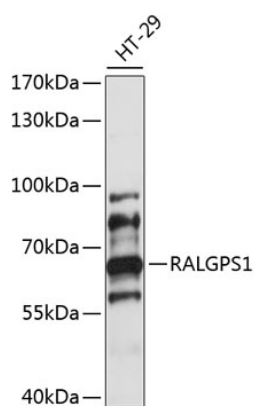
Affinity purification

Storage

Store at -20°C. Avoid freeze / thaw cycles.

Buffer: PBS with 0.01% thimerosal, 50% glycerol, pH7.3.

Validation Data



Western blot analysis of lysates from HT-29 cells, using RALGPS1 Rabbit pAb (A14828) at 1:1000 dilution.

Secondary antibody: HRP-conjugated Goat anti-Rabbit IgG (H+L) (AS014) at 1:10000 dilution.

Lysates/proteins: 25µg per lane.

Blocking buffer: 3% nonfat dry milk in TBST.

Detection: ECL Basic Kit (RM00020).

Exposure time: 60s.