

A14779

Leader in Biomolecular Solutions for Life Science



# S100A5 Rabbit pAb

Catalog No.: A14779

## Basic Information

### Observed MW

11kDa

### Calculated MW

11kDa

### Category

Polyclonal Antibody

### Applications

WB,IHC-P,ELISA

### Cross-Reactivity

Human

## Background

The protein encoded by this gene is a member of the S100 family of proteins containing 2 EF-hand calcium-binding motifs. S100 proteins are localized in the cytoplasm and/or nucleus of a wide range of cells, and involved in the regulation of a number of cellular processes such as cell cycle progression and differentiation. S100 genes include at least 13 members which are located as a cluster on chromosome 1q21. This protein has a Ca<sup>2+</sup> affinity 20- to 100-fold higher than the other S100 proteins studied under identical conditions. This protein also binds Zn<sup>2+</sup> and Cu<sup>2+</sup>, and Cu<sup>2+</sup> strongly which impairs the binding of Ca<sup>2+</sup>. This protein is expressed in very restricted regions of the adult brain.

## Recommended Dilutions

**WB** 1:500 - 1:2000

**IHC-P** 1:100 - 1:200

**ELISA** Recommended starting concentration is 1 µg/mL. Please optimize the concentration based on your specific assay requirements.

## Immunogen Information

### Gene ID

6276

### Swiss Prot

P33763

### Immunogen

Recombinant protein (or fragment). This information is considered to be commercially sensitive.

### Synonyms

S100D; S100A5

## Contact

 [www.abclonal.com](http://www.abclonal.com)

## Product Information

### Source

Rabbit

### Isotype

IgG

### Purification

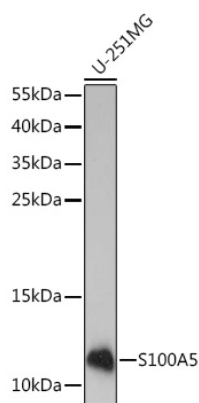
Affinity purification

### Storage

Store at -20°C. Avoid freeze / thaw cycles.

Buffer: PBS with 0.01% thimerosal, 50% glycerol, pH7.3.

## Validation Data



Western blot analysis of lysates from U-251MG cells, using S100A5 Rabbit pAb (A14779) at 1:1000 dilution.

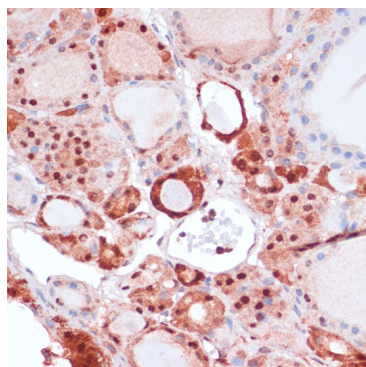
Secondary antibody: HRP-conjugated Goat anti-Rabbit IgG (H+L) (AS014) at 1:10000 dilution.

Lysates/proteins: 25µg per lane.

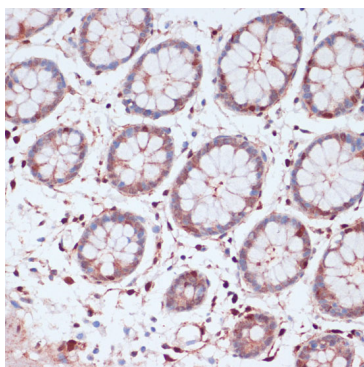
Blocking buffer: 3% nonfat dry milk in TBST.

Detection: ECL Enhanced Kit (RM00021).

Exposure time: 3min.



Immunohistochemistry analysis of paraffin-embedded Human thyroid cancer using S100A5 Rabbit pAb (A14779) at dilution of 1:100 (40x lens). Microwave antigen retrieval performed with 0.01M PBS Buffer (pH 7.2) prior to IHC staining.



Immunohistochemistry analysis of paraffin-embedded Human colon using S100A5 Rabbit pAb (A14779) at dilution of 1:100 (40x lens). Microwave antigen retrieval performed with 0.01M PBS Buffer (pH 7.2) prior to IHC staining.