

A14776

Leader in Biomolecular Solutions for Life Science



## RBBP6 Rabbit pAb

Catalog No.: A14776

### Basic Information

**Observed MW**

210kDa

**Calculated MW**

202kDa

**Category**

Polyclonal Antibody

**Applications**

WB,ELISA

**Cross-Reactivity**

Human,Mouse,Rat

### Background

The retinoblastoma tumor suppressor (pRB) protein binds with many other proteins. In various human cancers, pRB suppresses cellular proliferation and is inactivated. Cell cycle-dependent phosphorylation regulates the activity of pRB. This gene encodes a protein which binds to underphosphorylated but not phosphorylated pRB. Multiple alternatively spliced transcript variants that encode different isoforms have been found for this gene.

### Recommended Dilutions

WB 1:500 - 1:1000

### Immunogen Information

**Gene ID**

5930

**Swiss Prot**

Q7Z6E9

**Immunogen**

Recombinant fusion protein containing a sequence corresponding to amino acids 1240-1355 of human RBBP6 (NP\_008841.2).

**Synonyms**

PACT; MY038; P2P-R; RBQ-1; SNAMA; RBBP6

### Contact



[www.abclonal.com](http://www.abclonal.com)

### Product Information

**Source**

Rabbit

**Isotype**

IgG

**Purification**

Affinity purification

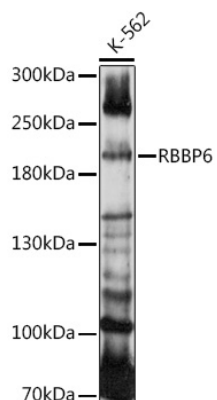
**Storage**

Store at -20°C. Avoid freeze / thaw cycles.

Buffer: PBS with 0.05% proclin300,50% glycerol,pH7.3.

## Validation Data

---



Western blot analysis of extracts of K-562 cells, using RBBP6 antibody (A14776) at 1:1000 dilution.

Secondary antibody: HRP Goat Anti-Rabbit IgG (H+L) (AS014) at 1:10000 dilution.

Lysates/proteins: 25µg per lane.

Blocking buffer: 3% nonfat dry milk in TBST.

Detection: ECL Enhanced Kit (RM00021).

Exposure time: 90s.