

A14743

Leader in Biomolecular Solutions for Life Science



HTR1F Rabbit pAb

Catalog No.: A14743

Basic Information

Observed MW

42kDa

Calculated MW

42kDa

Category

Polyclonal Antibody

Applications

WB,ELISA

Cross-Reactivity

Human,Mouse,Rat

Background

Enables G protein-coupled serotonin receptor activity and serotonin binding activity. Involved in adenylate cyclase-inhibiting G protein-coupled receptor signaling pathway. Is integral component of plasma membrane.

Recommended Dilutions

WB 1:500 - 1:2000

ELISA Recommended starting concentration is 1 µg/mL. Please optimize the concentration based on your specific assay requirements.

Immunogen Information

Gene ID

3355

Swiss Prot

P30939

Immunogen

Recombinant protein (or fragment). This information is considered to be commercially sensitive.

Synonyms

5HT6; MR77; 5-HT1F; HTR1EL; 5-HT-1F; HTR1F

Contact

 www.abclonal.com

Product Information

Source

Rabbit

Isotype

IgG

Purification

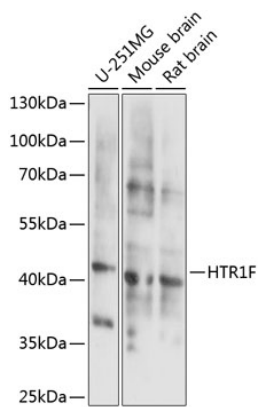
Affinity purification

Storage

Store at -20°C. Avoid freeze / thaw cycles.

Buffer: PBS with 0.01% thimerosal, 50% glycerol, pH7.3.

Validation Data



Western blot analysis of various lysates using HTR1F Rabbit pAb (A14743) at 1:1000 dilution.
Secondary antibody: HRP-conjugated Goat anti-Rabbit IgG (H+L) (AS014) at 1:10000 dilution.
Lysates/proteins: 25µg per lane.
Blocking buffer: 3% nonfat dry milk in TBST.
Detection: ECL Basic Kit (RM00020).
Exposure time: 15s.