

A14703

Leader in Biomolecular Solutions for Life Science



# ALOX12 Rabbit pAb

Catalog No.: A14703

6 Publications

## Basic Information

### Observed MW

76kDa

### Calculated MW

76kDa

### Category

Polyclonal Antibody

### Applications

WB,IHC-P,IF/ICC,ELISA

### Cross-Reactivity

Human,Mouse,Rat

## Background

This gene encodes a member of the lipoxygenase family of proteins. The encoded enzyme acts on different polyunsaturated fatty acid substrates to generate bioactive lipid mediators including eicosanoids and lipoxins. The encoded enzyme and its reaction products have been shown to regulate platelet function. Elevated expression of this gene has been observed in pancreatic islets derived from human diabetes patients. Allelic variants in this gene may be associated with susceptibility to toxoplasmosis. Multiple pseudogenes of this gene have been identified in the human genome.

## Recommended Dilutions

**WB** 1:500 - 1:1000

**IHC-P** 1:50 - 1:200

**IF** 1:50 - 1:200

**ELISA** Recommended starting concentration is 1 µg/mL. Please optimize the concentration based on your specific assay requirements.

## Immunogen Information

### Gene ID

239

### Swiss Prot

P18054

### Immunogen

Recombinant fusion protein containing a sequence corresponding to amino acids 483-663 of human ALOX12 (NP\_000688.2).

### Synonyms

LOG12; 12-LOX; 12S-LOX; ALOX12

## Product Information

### Source

Rabbit

### Isotype

IgG

### Purification

Affinity purification

### Storage

Store at -20°C. Avoid freeze / thaw cycles.

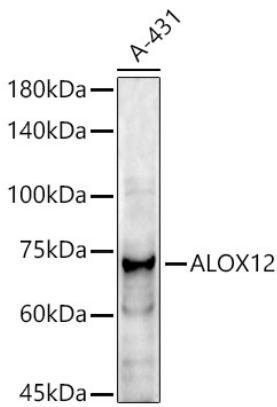
Buffer: PBS with 0.05% proclin300,50% glycerol,pH7.3.

## Contact



[www.abclonal.com](http://www.abclonal.com)

## Validation Data



Western blot analysis of lysates from A-431 cells, using ALOX12 Rabbit pAb (A14703) at 1:1000 dilution.

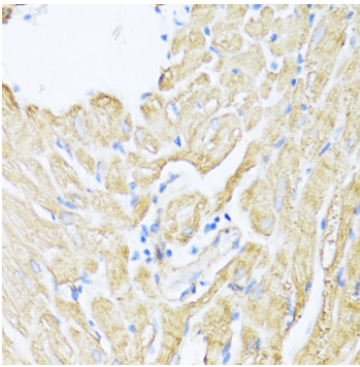
Secondary antibody: HRP-conjugated Goat anti-Rabbit IgG (H+L) (AS014) at 1:10000 dilution.

Lysates/proteins: 25µg per lane.

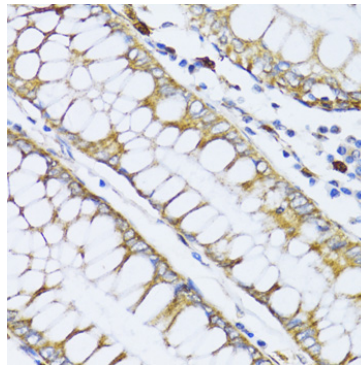
Blocking buffer: 3% nonfat dry milk in TBST.

Detection: ECL Enhanced Kit (RM00021).

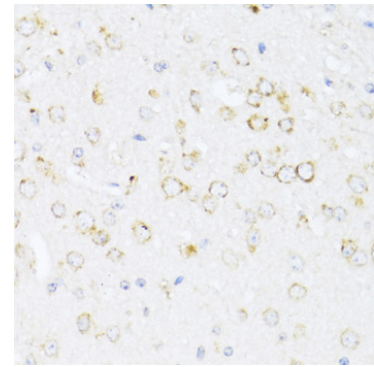
Exposure time: 180s.



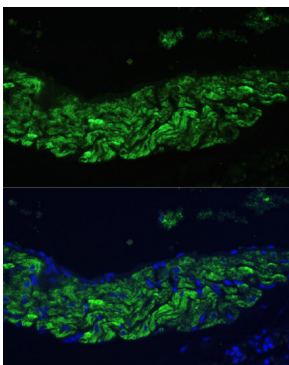
Immunohistochemistry analysis of paraffin-embedded Rat heart using ALOX12 Rabbit pAb (A14703) at dilution of 1:100 (40x lens). Microwave antigen retrieval performed with 0.01M PBS Buffer (pH 7.2) prior to IHC staining.



Immunohistochemistry analysis of paraffin-embedded Human colon carcinoma using ALOX12 Rabbit pAb (A14703) at dilution of 1:100 (40x lens). Microwave antigen retrieval performed with 0.01M PBS Buffer (pH 7.2) prior to IHC staining.



Immunohistochemistry analysis of paraffin-embedded Mouse brain using ALOX12 Rabbit pAb (A14703) at dilution of 1:100 (40x lens). Microwave antigen retrieval performed with 0.01M PBS Buffer (pH 7.2) prior to IHC staining.



Immunofluorescence analysis of paraffin-embedded rat lung using ALOX12 Rabbit pAb (A14703) at dilution of 1:100 (40x lens). Secondary antibody: Cy3-conjugated Goat anti-Rabbit IgG (H+L) (AS007) at 1:500 dilution. Blue: DAPI for nuclear staining.