

A14686

Leader in Biomolecular Solutions for Life Science



TEX2 Rabbit pAb

Catalog No.: A14686

Basic Information

Observed MW

130kDa

Calculated MW

125kDa

Category

Polyclonal Antibody

Applications

WB,ELISA

Cross-Reactivity

Human,Mouse

Background

Predicted to enable lipid binding activity. Predicted to be involved in lipid transport. Predicted to be located in endoplasmic reticulum membrane and nuclear membrane. Predicted to be integral component of membrane. Predicted to be active in endoplasmic reticulum.

Recommended Dilutions

WB 1:500 - 1:2000

ELISA Recommended starting concentration is 1 µg/mL. Please optimize the concentration based on your specific assay requirements.

Immunogen Information

Gene ID

55852

Swiss Prot

Q8IWB9

Immunogen

Recombinant protein (or fragment). This information is considered to be commercially sensitive.

Synonyms

HT008; TMEM96; TEX2

Contact



www.abclonal.com

Product Information

Source

Rabbit

Isotype

IgG

Purification

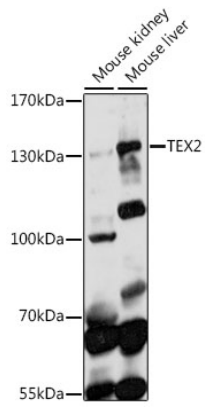
Affinity purification

Storage

Store at -20°C. Avoid freeze / thaw cycles.

Buffer: PBS with 0.01% thimerosal, 50% glycerol, pH7.3.

Validation Data



Western blot analysis of various lysates using TEX2 Rabbit pAb (A14686) at 1:1000 dilution.

Secondary antibody: HRP-conjugated Goat anti-Rabbit IgG (H+L) (AS014) at 1:10000 dilution.

Lysates/proteins: 25 μ g per lane.

Blocking buffer: 3% nonfat dry milk in TBST.

Detection: ECL Basic Kit (RM00020).

Exposure time: 90s.