

A14613

Leader in Biomolecular Solutions for Life Science



ADH1B Rabbit pAb

Catalog No.: A14613

Basic Information

Observed MW

40kDa

Calculated MW

40kDa

Category

Polyclonal Antibody

Applications

WB,IF/ICC,FC

Cross-Reactivity

Human

Background

The protein encoded by this gene is a member of the alcohol dehydrogenase family. Members of this enzyme family metabolize a wide variety of substrates, including ethanol, retinol, other aliphatic alcohols, hydroxysteroids, and lipid peroxidation products. This encoded protein, consisting of several homo- and heterodimers of alpha, beta, and gamma subunits, exhibits high activity for ethanol oxidation and plays a major role in ethanol catabolism. Three genes encoding alpha, beta and gamma subunits are tandemly organized in a genomic segment as a gene cluster. Two transcript variants encoding different isoforms have been found for this gene.

Recommended Dilutions

WB	1:500 - 1:1000
IF/ICC	1:20 - 1:50
FC	1:20 - 1:50

Immunogen Information

Gene ID

125

Swiss Prot

P00325

Immunogen

Synthetic peptide. This information is considered to be commercially sensitive.

Synonyms

ADH2; HEL-S-117; ADH1B

Contact

 www.abclonal.com

Product Information

Source

Rabbit

Isotype

IgG

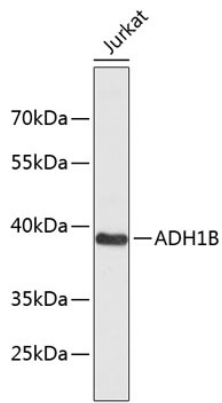
Purification

Affinity purification

Storage

Store at 4°C. Avoid freeze / thaw cycles.
Buffer: PBS with 0.02% sodium azide,pH7.3.

Validation Data



Western blot analysis of lysates from Jurkat cells, using ADH1B Rabbit pAb (A14613).
Secondary antibody: HRP-conjugated Goat anti-Rabbit IgG (H+L) (AS014) at 1:10000 dilution.

Lysates/proteins: 25µg per lane.

Blocking buffer: 3% nonfat dry milk in TBST.