

A14607

Leader in Biomolecular Solutions for Life Science



# RNASE12 Rabbit pAb

Catalog No.: A14607

## Basic Information

### Observed MW

17kDa

### Calculated MW

17kDa

### Category

Polyclonal Antibody

### Applications

WB,ELISA

### Cross-Reactivity

Mouse,Rat

## Background

Predicted to enable nucleic acid binding activity. Predicted to be located in extracellular region.

## Recommended Dilutions

**WB** 1:500 - 1:2000

**ELISA** Recommended starting concentration is 1 µg/mL. Please optimize the concentration based on your specific assay requirements.

## Immunogen Information

### Gene ID

493901

### Swiss Prot

Q5GAN4

### Immunogen

Synthetic peptide. This information is considered to be commercially sensitive.

### Synonyms

RAI1; HEL-S-85p; RNASE12

## Contact

 [www.abclonal.com](http://www.abclonal.com)

## Product Information

### Source

Rabbit

### Isotype

IgG

### Purification

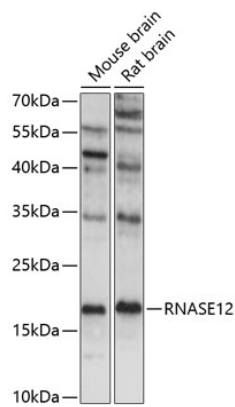
Affinity purification

### Storage

Store at -20°C. Avoid freeze / thaw cycles.

Buffer: PBS with 0.01% thimerosal, 50% glycerol, pH7.3.

## Validation Data



Western blot analysis of various lysates using RNASE12 Rabbit pAb (A14607) at 1:1000 dilution.

Secondary antibody: HRP-conjugated Goat anti-Rabbit IgG (H+L) (AS014) at 1:10000 dilution.

Lysates/proteins: 25µg per lane.

Blocking buffer: 3% nonfat dry milk in TBST.

Detection: ECL Basic Kit (RM00020).

Exposure time: 90s.