

A14595

Leader in Biomolecular Solutions for Life Science



ADGRL4 Rabbit pAb

Catalog No.: A14595

Basic Information

Observed MW

78kDa

Calculated MW

78kDa

Category

Polyclonal Antibody

Applications

WB,ELISA

Cross-Reactivity

Human,Mouse,Rat

Background

Predicted to enable G protein-coupled receptor activity. Predicted to be involved in adenylate cyclase-activating G protein-coupled receptor signaling pathway. Predicted to be located in cytoplasmic vesicle and plasma membrane. Predicted to be integral component of plasma membrane. Biomarker of glioblastoma and hypertrophic cardiomyopathy.

Recommended Dilutions

WB 1:500 - 1:2000

ELISA Recommended starting concentration is 1 µg/mL. Please optimize the concentration based on your specific assay requirements.

Immunogen Information

Gene ID

64123

Swiss Prot

Q9HBW9

Immunogen

Recombinant protein (or fragment). This information is considered to be commercially sensitive.

Synonyms

ETL; ELTD1; KPG_003; ADGRL4

Contact

 www.abclonal.com

Product Information

Source

Rabbit

Isotype

IgG

Purification

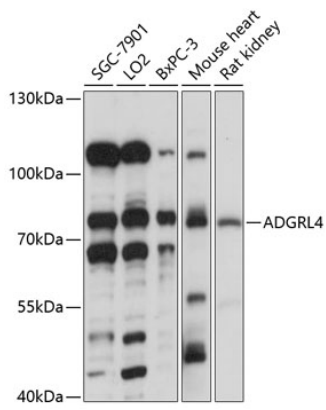
Affinity purification

Storage

Store at -20°C. Avoid freeze / thaw cycles.

Buffer: PBS with 0.01% thimerosal, 50% glycerol, pH7.3.

Validation Data



Western blot analysis of various lysates using ADGRL4 Rabbit pAb (A14595) at 1:1000 dilution.

Secondary antibody: HRP-conjugated Goat anti-Rabbit IgG (H+L) (AS014) at 1:10000 dilution.

Lysates/proteins: 25µg per lane.

Blocking buffer: 3% nonfat dry milk in TBST.

Detection: ECL Basic Kit (RM00020).

Exposure time: 30s.