

A14558

Leader in Biomolecular Solutions for Life Science



PNMA1 Rabbit pAb

Catalog No.: A14558

Basic Information

Observed MW

38kDa

Calculated MW

40kDa

Category

Polyclonal Antibody

Applications

WB,ELISA

Cross-Reactivity

Human,Mouse,Rat

Background

This gene encodes a neuron- and testis-specific protein that is also expressed in some paraneoplastic syndromes affecting the nervous system. Some patients with neurologic disorders develop antibodies against the protein encoded by this gene. The identification of the antineuronal antibodies in the sera of these patients has facilitated the diagnosis of paraneoplastic neurological disorders and the early detection of the associated tumors.

Recommended Dilutions

WB 1:500 - 1:2000

ELISA Recommended starting concentration is 1 µg/mL. Please optimize the concentration based on your specific assay requirements.

Immunogen Information

Gene ID

9240

Swiss Prot

Q8ND90

Immunogen

Recombinant fusion protein containing a sequence corresponding to amino acids 1-353 of human PNMA1 (NP_006020.4).

Synonyms

MA1; PNMA1

Contact

 www.abclonal.com

Product Information

Source

Rabbit

Isotype

IgG

Purification

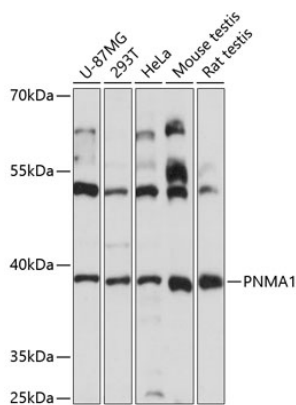
Affinity purification

Storage

Store at -20°C. Avoid freeze / thaw cycles.

Buffer: PBS with 0.01% thimerosal, 50% glycerol, pH7.3.

Validation Data



Western blot analysis of various lysates using PNMA1 Rabbit pAb (A14558) at 1:3000 dilution.
Secondary antibody: HRP-conjugated Goat anti-Rabbit IgG (H+L) (AS014) at 1:10000 dilution.
Lysates/proteins: 25µg per lane.
Blocking buffer: 3% nonfat dry milk in TBST.
Detection: ECL Basic Kit (RM00020).
Exposure time: 15s.