

A14546

Leader in Biomolecular Solutions for Life Science



NGDN Rabbit pAb

Catalog No.: A14546

Basic Information

Observed MW

36kDa

Calculated MW

36kDa

Category

Polyclonal Antibody

Applications

WB,ELISA

Cross-Reactivity

Human,Mouse,Rat

Background

Neuroguidin is an EIF4E (MIM 133440)-binding protein that interacts with CPEB (MIM 607342) and functions as a translational regulatory protein during development of the vertebrate nervous system (Jung et al., 2006 [PubMed 16705177]).

Recommended Dilutions

WB 1:500 - 1:2000

ELISA Recommended starting concentration is 1 µg/mL. Please optimize the concentration based on your specific assay requirements.

Immunogen Information

Gene ID

25983

Swiss Prot

Q8NEJ9

Immunogen

Recombinant protein (or fragment). This information is considered to be commercially sensitive.

Synonyms

NGD; LCP5; CANu1; lpd-2; C14orf120; NGDN

Contact

 www.abclonal.com

Product Information

Source

Rabbit

Isotype

IgG

Purification

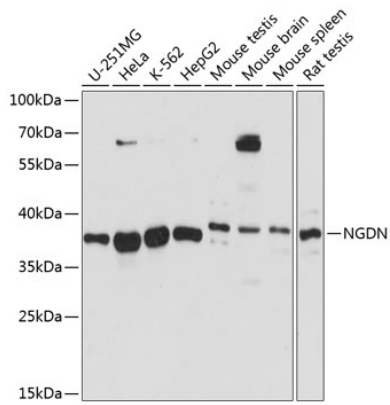
Affinity purification

Storage

Store at -20°C. Avoid freeze / thaw cycles.

Buffer: PBS with 0.01% thimerosal, 50% glycerol, pH7.3.

Validation Data



Western blot analysis of various lysates using NGDN Rabbit pAb (A14546) at 1:3000 dilution.

Secondary antibody: HRP-conjugated Goat anti-Rabbit IgG (H+L) (AS014) at 1:10000 dilution.

Lysates/proteins: 25µg per lane.

Blocking buffer: 3% nonfat dry milk in TBST.

Detection: ECL Basic Kit (RM00020).

Exposure time: 5s.