

A14511

Leader in Biomolecular Solutions for Life Science



OTUD6B Rabbit pAb

Catalog No.: A14511

1 Publications

Basic Information

Observed MW

38kDa

Calculated MW

34kDa

Category

Polyclonal Antibody

Applications

WB,IP,ELISA

Cross-Reactivity

Human,Mouse,Rat

Background

This gene encodes a member of the ovarian tumor domain (OTU)-containing subfamily of deubiquitinating enzymes. Deubiquitinating enzymes are primarily involved in removing ubiquitin from proteins targeted for degradation. This protein may function as a negative regulator of the cell cycle in B cells.

Recommended Dilutions

WB 1:500 - 1:2000

IP 0.5µg-4µg antibody for
200µg-400µg extracts
of whole cells

ELISA Recommended starting
concentration is 1
µg/mL. Please optimize
the concentration
based on your specific
assay requirements.

Immunogen Information

Gene ID
51633

Swiss Prot
Q8N6M0

Immunogen

Recombinant protein (or fragment). This information is considered to be commercially sensitive.

Synonyms

DUBA5; CGI-77; DUBA-5; IDDFSDA; OTUD6B

Product Information

Source
Rabbit

Isotype
IgG

Purification
Affinity purification

Storage

Store at -20°C. Avoid freeze / thaw cycles.

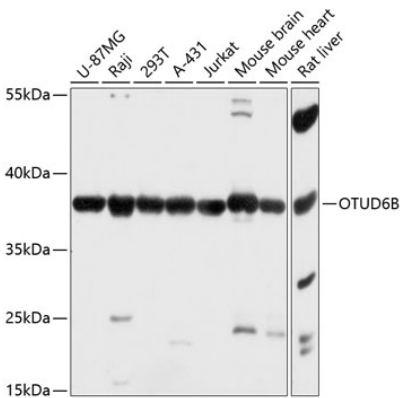
Buffer: PBS with 0.01% thimerosal, 50% glycerol, pH7.3.

Contact

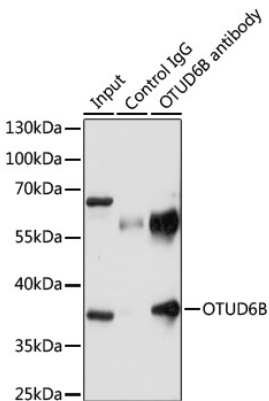


www.abclonal.com

Validation Data



Western blot analysis of various lysates using OTUD6B Rabbit pAb (A14511) at 1:3000 dilution.
Secondary antibody: HRP-conjugated Goat anti-Rabbit IgG (H+L) (AS014) at 1:10000 dilution.
Lysates/proteins: 25µg per lane.
Blocking buffer: 3% nonfat dry milk in TBST.
Detection: ECL Basic Kit (RM00020).
Exposure time: 30s.



Immunoprecipitation analysis of 200 µg extracts of U-87MG cells using 3 µg OTUD6B antibody (A14511). Western blot was performed from the immunoprecipitate using OTUD6B antibody (A14511) at a dilution of 1:1000.