

A14510

Leader in Biomolecular Solutions for Life Science



# APOBEC3C Rabbit pAb

Catalog No.: A14510

## Basic Information

### Observed MW

22kDa

### Calculated MW

23kDa

### Category

Polyclonal Antibody

### Applications

WB,IF/ICC,IP,ELISA

### Cross-Reactivity

Human

## Background

This gene is a member of the cytidine deaminase gene family. It is one of seven related genes or pseudogenes found in a cluster thought to result from gene duplication, on chromosome 22. Members of the cluster encode proteins that are structurally and functionally related to the C to U RNA-editing cytidine deaminase APOBEC1. It is thought that the proteins may be RNA editing enzymes and have roles in growth or cell cycle control.

## Recommended Dilutions

**WB** 1:500 - 1:2000

**IF/ICC** 1:50 - 1:200

**IP** 0.5µg-4µg antibody for  
200µg-400µg extracts  
of whole cells

**ELISA** Recommended starting  
concentration is 1  
µg/mL. Please optimize  
the concentration  
based on your specific  
assay requirements.

## Contact

 [www.abclonal.com](http://www.abclonal.com)

## Immunogen Information

### Gene ID

27350

### Swiss Prot

Q9NRW3

### Immunogen

Recombinant protein (or fragment). This information is considered to be commercially sensitive.

### Synonyms

A3C; PBI; ARP5; ARDC2; ARDC4; APOBEC1L; bK150C2.3; APOBEC3C

## Product Information

### Source

Rabbit

### Isotype

IgG

### Purification

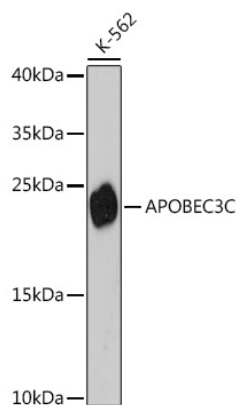
Affinity purification

### Storage

Store at -20°C. Avoid freeze / thaw cycles.

Buffer: PBS with 0.01% thimerosal, 50% glycerol, pH7.3.

## Validation Data



Western blot analysis of lysates from K-562 cells, using APOBEC3C Rabbit pAb (A14510) at 1:3000 dilution.

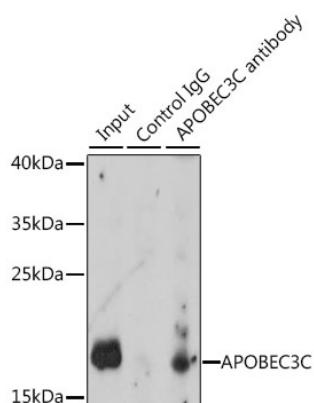
Secondary antibody: HRP-conjugated Goat anti-Rabbit IgG (H+L) (AS014) at 1:10000 dilution.

Lysates/proteins: 25µg per lane.

Blocking buffer: 3% nonfat dry milk in TBST.

Detection: ECL Basic Kit (RM00020).

Exposure time: 90s.



Immunoprecipitation analysis of 200 µg extracts of K-562 cells, using 3 µg APOBEC3C antibody (A14510). Western blot was performed from the immunoprecipitate using APOBEC3C antibody (A14510) at a dilution of 1:1000.