

A14485

Leader in Biomolecular Solutions for Life Science



PEBP4 Rabbit pAb

Catalog No.: A14485

Basic Information

Observed MW

26kDa

Calculated MW

26kDa

Category

Polyclonal Antibody

Applications

WB,ELISA

Cross-Reactivity

Mouse

Background

The phosphatidylethanolamine (PE)-binding proteins, including PEBP4, are an evolutionarily conserved family of proteins with pivotal biologic functions, such as lipid binding and inhibition of serine proteases (Wang et al., 2004 [PubMed 15302887]).

Recommended Dilutions

WB 1:500 - 1:1000

Immunogen Information

Gene ID

157310

Swiss Prot

Q96S96

Immunogen

Recombinant fusion protein containing a sequence corresponding to amino acids 23-120 of human PEBP4 (NP_659399.2).

Synonyms

CORK1; CORK-1; PEBP-4; hPEBP4; PRO4408; GWTM1933; HEL-S-300; PEBP4

Contact



www.abclonal.com

Product Information

Source

Rabbit

Isotype

IgG

Purification

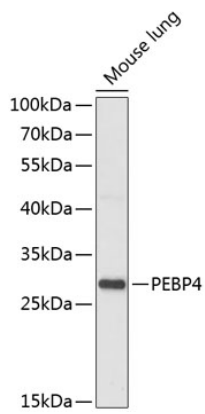
Affinity purification

Storage

Store at -20°C. Avoid freeze / thaw cycles.

Buffer: PBS with 0.01% thimerosal, 50% glycerol, pH7.3.

Validation Data



Western blot analysis of lysates from mouse lung, using PEBP4 Rabbit pAb (A14485) at 1:1000 dilution.
Secondary antibody: HRP Goat Anti-Rabbit IgG (H+L) (AS014) at 1:10000 dilution.
Lysates/proteins: 25 μ g per lane.
Blocking buffer: 3% nonfat dry milk in TBST.
Detection: ECL Enhanced Kit (RM00021).
Exposure time: 30s.