

A14484

Leader in Biomolecular Solutions for Life Science



## C7orf50 Rabbit pAb

Catalog No.: A14484

### Basic Information

#### Observed MW

Refer to Figures

#### Calculated MW

22kDa

#### Category

Polyclonal Antibody

#### Applications

WB,ELISA

#### Cross-Reactivity

Human,Mouse

### Background

Enables RNA binding activity.

### Recommended Dilutions

**WB** 1:500 - 1:2000

**ELISA** Recommended starting concentration is 1 µg/mL. Please optimize the concentration based on your specific assay requirements.

### Immunogen Information

#### Gene ID

84310

#### Swiss Prot

Q9BRJ6

#### Immunogen

Recombinant fusion protein containing a sequence corresponding to amino acids 1-194 of human C7orf50 (NP\_115726.1).

#### Synonyms

YCR016W; C7orf50

### Contact



[www.abclonal.com](http://www.abclonal.com)

### Product Information

#### Source

Rabbit

#### Isotype

IgG

#### Purification

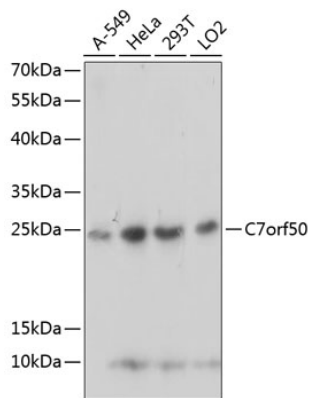
Affinity purification

#### Storage

Store at -20°C. Avoid freeze / thaw cycles.

Buffer: PBS with 0.01% thimerosal, 50% glycerol, pH7.3.

## Validation Data



Western blot analysis of various lysates using C7orf50 Rabbit pAb (A14484) at 1:1000 dilution.

Secondary antibody: HRP-conjugated Goat anti-Rabbit IgG (H+L) (AS014) at 1:10000 dilution.

Lysates/proteins: 25µg per lane.

Blocking buffer: 3% nonfat dry milk in TBST.

Detection: ECL Basic Kit (RM00020).

Exposure time: 5s.