

A14437

Leader in Biomolecular Solutions for Life Science



# OMA1 Rabbit pAb

Catalog No.: A14437

2 Publications

## Basic Information

### Observed MW

60kDa

### Calculated MW

60kDa

### Category

Polyclonal Antibody

### Applications

WB,ELISA

### Cross-Reactivity

Human,Mouse

## Background

Enables metalloendopeptidase activity. Involved in several processes, including HRI-mediated signaling; proteolysis; and regulation of mitochondrion organization. Located in mitochondrial inner membrane.

## Recommended Dilutions

**WB** 1:500 - 1:2000

**ELISA** Recommended starting concentration is 1 µg/mL. Please optimize the concentration based on your specific assay requirements.

## Immunogen Information

### Gene ID

115209

### Swiss Prot

Q96E52

### Immunogen

Recombinant protein (or fragment). This information is considered to be commercially sensitive.

### Synonyms

DAB1; MPRP1; MPRP-1; YKR087C; ZMPOMA1; peptidase; 2010001O09Rik; OMA1

## Contact

 [www.abclonal.com](http://www.abclonal.com)

## Product Information

### Source

Rabbit

### Isotype

IgG

### Purification

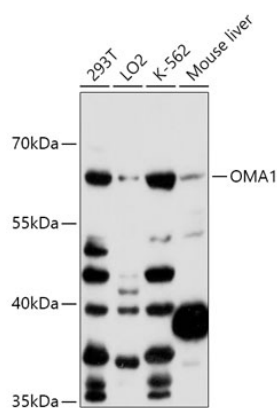
Affinity purification

### Storage

Store at -20°C. Avoid freeze / thaw cycles.

Buffer: PBS with 0.01% thimerosal, 50% glycerol, pH7.3.

## Validation Data



Western blot analysis of various lysates using OMA1 Rabbit pAb (A14437) at 1:1000 dilution.  
Secondary antibody: HRP-conjugated Goat anti-Rabbit IgG (H+L) (AS014) at 1:10000 dilution.  
Lysates/proteins: 25µg per lane.  
Blocking buffer: 3% nonfat dry milk in TBST.  
Detection: ECL Basic Kit (RM00020).  
Exposure time: 60s.