

A14426

Leader in Biomolecular Solutions for Life Science



PIGZ Rabbit pAb

Catalog No.: A14426

Basic Information

Observed MW

63kDa

Calculated MW

63kDa

Category

Polyclonal Antibody

Applications

WB, ELISA

Cross-Reactivity

Human

Background

The glycosylphosphatidylinositol (GPI) anchor is a glycolipid found on many blood cells that serves to anchor proteins to the cell surface. This gene encodes a protein that is localized to the endoplasmic reticulum, and is involved in GPI anchor biosynthesis. As shown for the yeast homolog, which is a member of a family of dolichol-phosphate-mannose (Dol-P-Man)-dependent mannosyltransferases, this protein can also add a side-branching fourth mannose to GPI precursors during the assembly of GPI anchors.

Recommended Dilutions

WB 1:500 - 1:2000

ELISA Recommended starting concentration is 1 µg/mL. Please optimize the concentration based on your specific assay requirements.

Immunogen Information

Gene ID

80235

Swiss Prot

Q86VD9

Immunogen

Recombinant protein (or fragment). This information is considered to be commercially sensitive.

Synonyms

SMP3; PIG-Z; GPI-MT-IV; PIGZ

Contact

 www.abclonal.com

Product Information

Source

Rabbit

Isotype

IgG

Purification

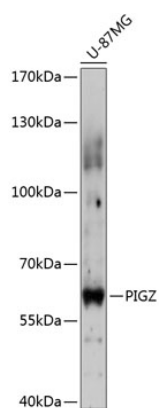
Affinity purification

Storage

Store at -20°C. Avoid freeze / thaw cycles.

Buffer: PBS with 0.01% thimerosal, 50% glycerol, pH 7.3.

Validation Data



Western blot analysis of lysates from U-87MG cells, using PIGZ Rabbit pAb (A14426) at 1:3000 dilution.

Secondary antibody: HRP-conjugated Goat anti-Rabbit IgG (H+L) (AS014) at 1:10000 dilution.

Lysates/proteins: 25µg per lane.

Blocking buffer: 3% nonfat dry milk in TBST.

Detection: ECL Enhanced Kit (RM00021).

Exposure time: 30s.