

A14416

Leader in Biomolecular Solutions for Life Science



## PDP2 Rabbit pAb

Catalog No.: A14416

### Basic Information

**Observed MW**

57kDa

**Calculated MW**

60kDa

**Category**

Polyclonal Antibody

**Applications**

WB,ELISA

**Cross-Reactivity**

Human,Mouse,Rat

### Background

This gene is a mitochondrial protein that functions as a phosphatase and is involved in the enzymatic resetting of the pyruvate dehydrogenase complex. Alternative splicing results in multiple transcript variants encoding the same protein.

### Recommended Dilutions

**WB** 1:500 - 1:2000

**ELISA** Recommended starting concentration is 1 µg/mL. Please optimize the concentration based on your specific assay requirements.

### Immunogen Information

**Gene ID**

57546

**Swiss Prot**

Q9P2J9

**Immunogen**

Recombinant protein (or fragment). This information is considered to be commercially sensitive.

**Synonyms**

PPM2B; PDPC 2; PPM2C2; PDP2

### Contact



[www.abclonal.com](http://www.abclonal.com)

### Product Information

**Source**

Rabbit

**Isotype**

IgG

**Purification**

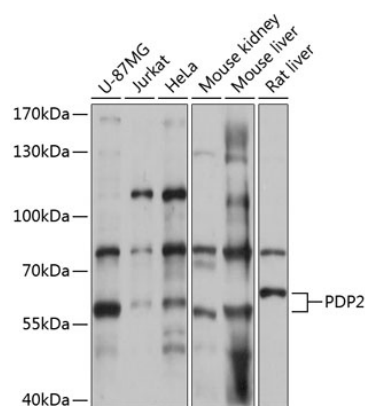
Affinity purification

**Storage**

Store at -20°C. Avoid freeze / thaw cycles.

Buffer: PBS with 0.01% thimerosal, 50% glycerol, pH7.3.

## Validation Data



Western blot analysis of various lysates using PDP2 Rabbit pAb (A14416) at 1:3000 dilution.  
Secondary antibody: HRP-conjugated Goat anti-Rabbit IgG (H+L) (AS014) at 1:10000 dilution.  
Lysates/proteins: 25µg per lane.  
Blocking buffer: 3% nonfat dry milk in TBST.  
Detection: ECL Basic Kit (RM00020).  
Exposure time: 15s.