

A14410

Leader in Biomolecular Solutions for Life Science



G2E3 Rabbit pAb

Catalog No.: A14410

Basic Information

Observed MW

80kDa

Calculated MW

81kDa

Category

Polyclonal Antibody

Applications

WB,ELISA

Cross-Reactivity

Human,Mouse,Rat

Background

Predicted to enable ubiquitin protein ligase activity. Predicted to be involved in apoptotic process and protein ubiquitination. Predicted to act upstream of or within blastocyst development; negative regulation of intrinsic apoptotic signaling pathway; and protein polyubiquitination. Located in Golgi apparatus and cytosol.

Recommended Dilutions

WB 1:500 - 1:2000

ELISA Recommended starting concentration is 1 µg/mL. Please optimize the concentration based on your specific assay requirements.

Immunogen Information

Gene ID

55632

Swiss Prot

Q7L622

Immunogen

Recombinant protein (or fragment). This information is considered to be commercially sensitive.

Synonyms

PHF7B; KIAA1333; G2E3

Contact



www.abclonal.com

Product Information

Source

Rabbit

Isotype

IgG

Purification

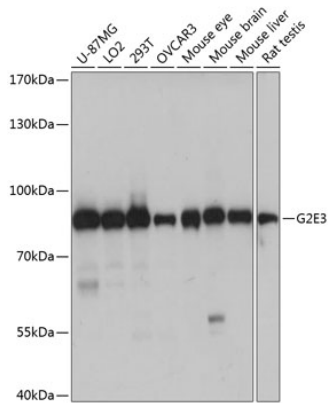
Affinity purification

Storage

Store at -20°C. Avoid freeze / thaw cycles.

Buffer: PBS with 0.01% thimerosal, 50% glycerol, pH7.3.

Validation Data



Western blot analysis of various lysates using G2E3 Rabbit pAb (A14410) at 1:1000 dilution.
Secondary antibody: HRP-conjugated Goat anti-Rabbit IgG (H+L) (AS014) at 1:10000 dilution.
Lysates/proteins: 25µg per lane.
Blocking buffer: 3% nonfat dry milk in TBST.
Detection: ECL Basic Kit (RM00020).
Exposure time: 1s.