

A14399

Leader in Biomolecular Solutions for Life Science



CCDC59 Rabbit pAb

Catalog No.: A14399

Basic Information

Observed MW

29kDa

Calculated MW

29kDa

Category

Polyclonal Antibody

Applications

WB,IHC-P,IF/ICC,ELISA

Cross-Reactivity

Human,Mouse,Rat

Background

Enables RNA binding activity. Predicted to be located in nucleoplasm.

Recommended Dilutions

WB 1:500 - 1:2000

IHC-P 1:50 - 1:100

IF/ICC 1:50 - 1:100

ELISA Recommended starting concentration is 1 µg/mL. Please optimize the concentration based on your specific assay requirements.

Immunogen Information

Gene ID

29080

Swiss Prot

Q9P031

Immunogen

Recombinant fusion protein containing a sequence corresponding to amino acids 1-241 of human CCDC59 (NP_054886.2).

Synonyms

BR22; TAP26; HSPC128; CCDC59

Product Information

Source

Rabbit

Isotype

IgG

Purification

Affinity purification

Storage

Store at -20°C. Avoid freeze / thaw cycles.

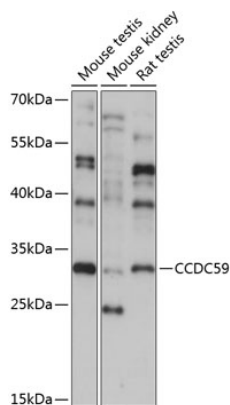
Buffer: PBS with 0.01% thimerosal, 50% glycerol, pH7.3.

Contact



www.abclonal.com

Validation Data



Western blot analysis of various lysates using CCDC59 Rabbit pAb (A14399) at 1:1000 dilution.

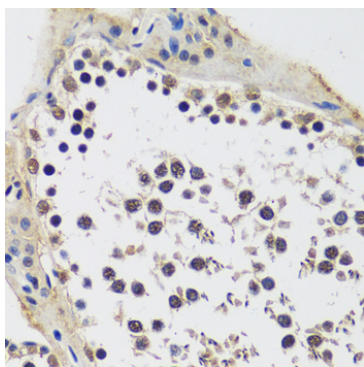
Secondary antibody: HRP-conjugated Goat anti-Rabbit IgG (H+L) (AS014) at 1:10000 dilution.

Lysates/proteins: 25µg per lane.

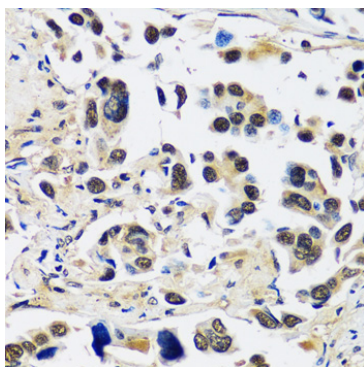
Blocking buffer: 3% nonfat dry milk in TBST.

Detection: ECL Basic Kit (RM00020).

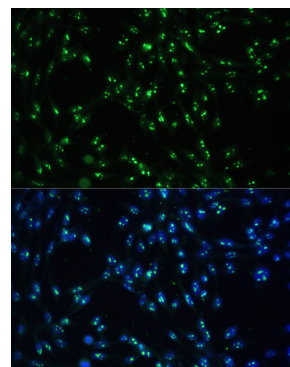
Exposure time: 15s.



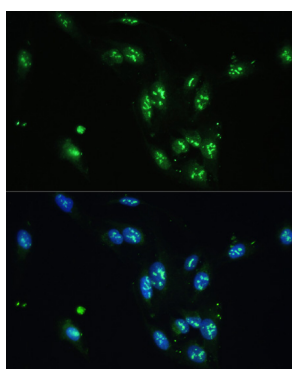
Immunohistochemistry analysis of paraffin-embedded Rat testis using CCDC59 Rabbit pAb (A14399) at dilution of 1:100 (40x lens). Microwave antigen retrieval performed with 0.01M PBS Buffer (pH 7.2) prior to IHC staining.



Immunohistochemistry analysis of paraffin-embedded Human lung cancer using CCDC59 Rabbit pAb (A14399) at dilution of 1:100 (40x lens). Microwave antigen retrieval performed with 0.01M PBS Buffer (pH 7.2) prior to IHC staining.



Immunofluorescence analysis of NIH-3T3 cells using CCDC59 Rabbit pAb (A14399) at dilution of 1:100. Secondary antibody: Cy3-conjugated Goat anti-Rabbit IgG (H+L) (AS007) at 1:500 dilution. Blue: DAPI for nuclear staining.



Immunofluorescence analysis of U-2 OS cells using CCDC59 Rabbit pAb (A14399) at dilution of 1:100. Secondary antibody: Cy3-conjugated Goat anti-Rabbit IgG (H+L) (AS007) at 1:500 dilution. Blue: DAPI for nuclear staining.