

A14396

Leader in Biomolecular Solutions for Life Science



# SYF2 Rabbit pAb

Catalog No.: A14396

## Basic Information

---

### Observed MW

29kDa

### Calculated MW

29kDa

### Category

Polyclonal Antibody

### Applications

WB,ELISA

### Cross-Reactivity

Mouse

## Background

---

This gene encodes a nuclear protein that interacts with cyclin D-type binding-protein 1, which is thought to be a cell cycle regulator at the G1/S transition. Alternate transcriptional splice variants, encoding different isoforms, have been characterized.

## Recommended Dilutions

---

WB 1:500 - 1:2000

## Immunogen Information

---

### Gene ID

25949

### Swiss Prot

O95926

### Immunogen

Recombinant fusion protein containing a sequence corresponding to amino acids 1-243 of human SYF2 (NP\_056299.1).

### Synonyms

P29; CBPIN; NTC31; fSAP29; SYF2

## Contact

---



[www.abclonal.com](http://www.abclonal.com)

## Product Information

---

### Source

Rabbit

### Isotype

IgG

### Purification

Affinity purification

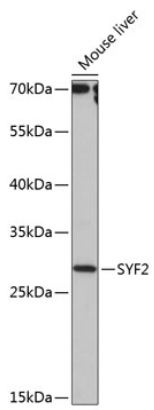
### Storage

Store at -20°C. Avoid freeze / thaw cycles.

Buffer: PBS with 0.01% thimerosal,50% glycerol,pH7.3.

## Validation Data

---



Western blot analysis of lysates from mouse liver, using SYF2 Rabbit pAb (A14396) at 1:1000 dilution.  
Secondary antibody: HRP Goat Anti-Rabbit IgG (H+L) (AS014) at 1:10000 dilution.  
Lysates/proteins: 25 $\mu$ g per lane.  
Blocking buffer: 3% nonfat dry milk in TBST.  
Detection: ECL Basic Kit (RM00020).  
Exposure time: 90s.