

A14386

Leader in Biomolecular Solutions for Life Science



TGFBRAP1 Rabbit pAb

Catalog No.: A14386

Basic Information

Observed MW

97kDa

Calculated MW

97kDa

Category

Polyclonal Antibody

Applications

WB,ELISA

Cross-Reactivity

Human,Mouse

Background

This gene encodes a protein that binds to transforming growth factor-beta (TGF-beta) receptors and plays a role in TGF-beta signaling. The encoded protein acts as a chaperone in signaling downstream of TGF-beta. It is involved in signal-dependent association with SMAD4. The protein is also a component of mammalian CORVET, a multisubunit tethering protein complex that is involved in fusion of early endosomes.

Recommended Dilutions

WB 1:500 - 1:2000

Immunogen Information

Gene ID

9392

Swiss Prot

Q8WUH2

Immunogen

Recombinant fusion protein containing a sequence corresponding to amino acids 621-860 of human TGFBRAP1 (NP_004248.2).

Synonyms

VPS3; TRAP1; TRAP-1; TGFBRAP1

Contact



www.abclonal.com

Product Information

Source

Rabbit

Isotype

IgG

Purification

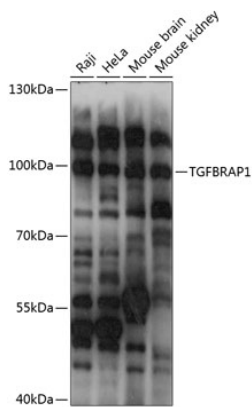
Affinity purification

Storage

Store at -20°C. Avoid freeze / thaw cycles.

Buffer: PBS with 0.01% thimerosal, 50% glycerol, pH7.3.

Validation Data



Western blot analysis of various lysates using TGFBRAP1 Rabbit pAb (A14386) at 1:1000 dilution.

Secondary antibody: HRP Goat Anti-Rabbit IgG (H+L) (AS014) at 1:10000 dilution.

Lysates/proteins: 25µg per lane.

Blocking buffer: 3% nonfat dry milk in TBST.

Detection: ECL Basic Kit (RM00020).

Exposure time: 1s.