

A14377

Leader in Biomolecular Solutions for Life Science



LRMP Rabbit pAb

Catalog No.: A14377

Basic Information

Observed MW

75kDa

Calculated MW

62kDa

Category

Polyclonal Antibody

Applications

WB,ELISA

Cross-Reactivity

Human,Mouse

Background

The protein encoded by this gene is expressed in a developmentally regulated manner in lymphoid cell lines and tissues. The protein is localized to the cytoplasmic face of the endoplasmic reticulum.

Recommended Dilutions

WB 1:500 - 1:2000

ELISA Recommended starting concentration is 1 µg/mL. Please optimize the concentration based on your specific assay requirements.

Immunogen Information

Gene ID

4033

Swiss Prot

Q12912

Immunogen

Recombinant fusion protein containing a sequence corresponding to amino acids 1-290 of human LRMP (NP_006143.2).

Synonyms

JAW1; LRMP

Contact



www.abclonal.com

Product Information

Source

Rabbit

Isotype

IgG

Purification

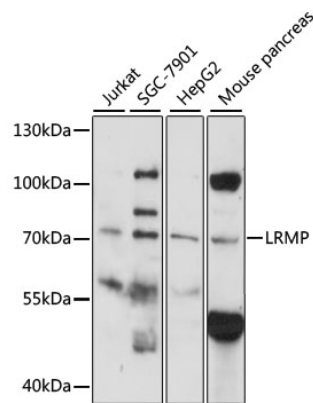
Affinity purification

Storage

Store at -20°C. Avoid freeze / thaw cycles.

Buffer: PBS with 0.01% thimerosal, 50% glycerol, pH 7.3.

Validation Data



Western blot analysis of various lysates using LRMP Rabbit pAb (A14377) at 1:1000 dilution.
Secondary antibody: HRP-conjugated Goat anti-Rabbit IgG (H+L) (AS014) at 1:10000 dilution.
Lysates/proteins: 25µg per lane.
Blocking buffer: 3% nonfat dry milk in TBST.
Detection: ECL Basic Kit (RM00020).
Exposure time: 90s.