

A14360

Leader in Biomolecular Solutions for Life Science



CHMP7 Rabbit pAb

Catalog No.: A14360

1 Publications

Basic Information

Observed MW

60kDa

Calculated MW

51kDa

Category

Polyclonal Antibody

Applications

WB,ELISA

Cross-Reactivity

Human,Mouse,Rat

Background

Involved in several processes, including late endosome to vacuole transport; midbody abscission; and mitotic nuclear division. Located in cytosol; nuclear envelope; and nucleoplasm. Part of ESCRT III complex. Colocalizes with chromatin.

Recommended Dilutions

WB 1:500 - 1:2000

ELISA Recommended starting concentration is 1 µg/mL. Please optimize the concentration based on your specific assay requirements.

Immunogen Information

Gene ID

91782

Swiss Prot

Q8WUX9

Immunogen

Recombinant protein (or fragment). This information is considered to be commercially sensitive.

Synonyms

CHMP7

Contact



www.abclonal.com

Product Information

Source

Rabbit

Isotype

IgG

Purification

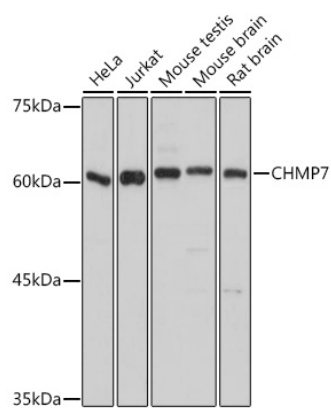
Affinity purification

Storage

Store at -20°C. Avoid freeze / thaw cycles.

Buffer: PBS containing 50% glycerol, preserved with proclin300 or sodium azide (as specified on the Certificate of Analysis), pH 7.3.

Validation Data



Western blot analysis of various lysates using CHMP7 Rabbit pAb (A14360) at 1:1000 dilution.
Secondary antibody: HRP-conjugated Goat anti-Rabbit IgG (H+L) (AS014) at 1:10000 dilution.
Lysates/proteins: 25µg per lane.
Blocking buffer: 3% nonfat dry milk in TBST.
Detection: ECL Basic Kit (RM00020).
Exposure time: 10s.