

A14359

Leader in Biomolecular Solutions for Life Science



## CERCAM Rabbit pAb

Catalog No.: A14359

### Basic Information

#### Observed MW

75kDa

#### Calculated MW

68kDa

#### Category

Polyclonal Antibody

#### Applications

WB, ELISA

#### Cross-Reactivity

Human

### Background

Enables identical protein binding activity. Acts upstream of or within cell adhesion. Predicted to be located in endoplasmic reticulum lumen.

### Recommended Dilutions

**WB** 1:500 - 1:2000

**ELISA** Recommended starting concentration is 1 µg/mL. Please optimize the concentration based on your specific assay requirements.

### Immunogen Information

#### Gene ID

51148

#### Swiss Prot

Q5T4B2

#### Immunogen

Recombinant fusion protein containing a sequence corresponding to amino acids 466-595 of human CERCAM (NP\_057258.3).

#### Synonyms

CEECAM1; GLT25D3; CERCAM

### Contact

 [www.abclonal.com](http://www.abclonal.com)

### Product Information

#### Source

Rabbit

#### Isotype

IgG

#### Purification

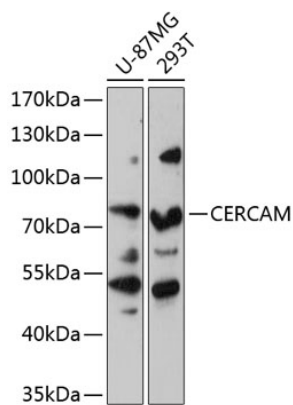
Affinity purification

#### Storage

Store at -20°C. Avoid freeze / thaw cycles.

Buffer: PBS with 0.01% thimerosal, 50% glycerol, pH7.3.

Validation Data



Western blot analysis of various lysates using CERCAM Rabbit pAb (A14359) at 1:3000 dilution.  
Secondary antibody: HRP-conjugated Goat anti-Rabbit IgG (H+L) (AS014) at 1:10000 dilution.  
Lysates/proteins: 25µg per lane.  
Blocking buffer: 3% nonfat dry milk in TBST.  
Detection: ECL Basic Kit (RM00020).  
Exposure time: 90s.