

A14338

Leader in Biomolecular Solutions for Life Science



# DMRTA1 Rabbit pAb

Catalog No.: A14338

## Basic Information

### Observed MW

56kDa

### Calculated MW

53kDa

### Category

Polyclonal Antibody

### Applications

WB,ELISA

### Cross-Reactivity

Mouse

## Background

Enables sequence-specific double-stranded DNA binding activity. Predicted to be involved in germ cell development; regulation of transcription by RNA polymerase II; and sex differentiation. Predicted to act upstream of or within male mating behavior and ovarian follicle development. Predicted to be part of chromatin. Predicted to be active in nucleus.

## Recommended Dilutions

**WB** 1:500 - 1:2000

**ELISA** Recommended starting concentration is 1 µg/mL. Please optimize the concentration based on your specific assay requirements.

## Immunogen Information

### Gene ID

63951

### Swiss Prot

Q5VZB9

### Immunogen

Recombinant protein (or fragment). This information is considered to be commercially sensitive.

### Synonyms

DMO; DMRT4; DMRTA1

## Contact

 [www.abclonal.com](http://www.abclonal.com)

## Product Information

### Source

Rabbit

### Isotype

IgG

### Purification

Affinity purification

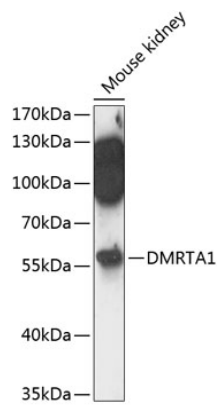
### Storage

Store at -20°C. Avoid freeze / thaw cycles.

Buffer: PBS with 0.01% thimerosal, 50% glycerol, pH7.3.

## Validation Data

---



Western blot analysis of lysates from mouse kidney, using DMRTA1 Rabbit pAb (A14338) at 1:3000 dilution.

Secondary antibody: HRP-conjugated Goat anti-Rabbit IgG (H+L) (AS014) at 1:10000 dilution.

Lysates/proteins: 25µg per lane.

Blocking buffer: 3% nonfat dry milk in TBST.

Detection: ECL Basic Kit (RM00020).

Exposure time: 90s.