

A14336

Leader in Biomolecular Solutions for Life Science



CRIPT Rabbit pAb

Catalog No.: A14336

Basic Information

Observed MW

11kDa

Calculated MW

11kDa

Category

Polyclonal Antibody

Applications

WB,ELISA

Cross-Reactivity

Mouse,Rat

Background

This gene encodes a protein that binds to the PDZ3 peptide recognition domain. The encoded protein may modulates protein interactions with the cytoskeleton. A mutation in this gene resulted in short stature with microcephaly and distinctive facies.

Recommended Dilutions

WB 1:500 - 1:2000

ELISA Recommended starting concentration is 1 µg/mL. Please optimize the concentration based on your specific assay requirements.

Immunogen Information

Gene ID

9419

Swiss Prot

Q9P021

Immunogen

Recombinant protein (or fragment). This information is considered to be commercially sensitive.

Synonyms

SSMDF; HSPC139; CRIPT

Contact



www.abclonal.com

Product Information

Source

Rabbit

Isotype

IgG

Purification

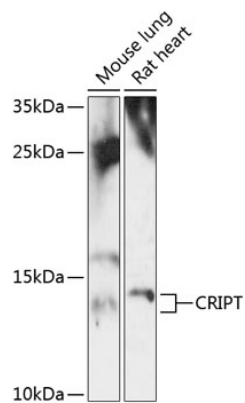
Affinity purification

Storage

Store at -20°C. Avoid freeze / thaw cycles.

Buffer: PBS with 0.01% thimerosal, 50% glycerol, pH7.3.

Validation Data



Western blot analysis of various lysates using CRIPT Rabbit pAb (A14336) at 1:3000 dilution.

Secondary antibody: HRP-conjugated Goat anti-Rabbit IgG (H+L) (AS014) at 1:10000 dilution.

Lysates/proteins: 25µg per lane.

Blocking buffer: 3% nonfat dry milk in TBST.

Detection: ECL Enhanced Kit (RM00021).

Exposure time: 90s.