

A14306

Leader in Biomolecular Solutions for Life Science



KNSTRN Rabbit pAb

Catalog No.: A14306

Basic Information

Observed MW

34kDa

Calculated MW

35kDa

Category

Polyclonal Antibody

Applications

WB,ELISA

Cross-Reactivity

Human

Background

Enables microtubule plus-end binding activity and protein homodimerization activity. Involved in several processes, including cellular response to epidermal growth factor stimulus; mitotic sister chromatid segregation; and regulation of attachment of spindle microtubules to kinetochore. Located in several cellular components, including kinetochore; microtubule cytoskeleton; and ruffle. Implicated in actinic keratosis and skin squamous cell carcinoma.

Recommended Dilutions

WB 1:500 - 1:2000

ELISA Recommended starting concentration is 1 µg/mL. Please optimize the concentration based on your specific assay requirements.

Immunogen Information

Gene ID

90417

Swiss Prot

Q9Y448

Immunogen

Recombinant protein (or fragment). This information is considered to be commercially sensitive.

Synonyms

SKAP; HSD11; ROCHIS; C15orf23; TRAF4AF1; KNSTRN

Contact



www.abclonal.com

Product Information

Source

Rabbit

Isotype

IgG

Purification

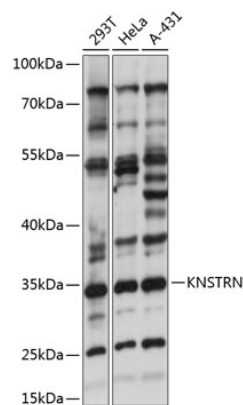
Affinity purification

Storage

Store at -20°C. Avoid freeze / thaw cycles.

Buffer: PBS with 0.01% thimerosal, 50% glycerol, pH7.3.

Validation Data



Western blot analysis of various lysates using KNSTRN Rabbit pAb (A14306) at 1:1000 dilution.
Secondary antibody: HRP-conjugated Goat anti-Rabbit IgG (H+L) (AS014) at 1:10000 dilution.
Lysates/proteins: 25µg per lane.
Blocking buffer: 3% nonfat dry milk in TBST.
Detection: ECL Basic Kit (RM00020).
Exposure time: 5s.