

A14290

Leader in Biomolecular Solutions for Life Science



ZSCAN31 Rabbit pAb

Catalog No.: A14290

Basic Information

Observed MW

47kDa

Calculated MW

47kDa

Category

Polyclonal Antibody

Applications

WB,ELISA

Cross-Reactivity

Rat

Background

This gene encodes a protein containing multiple C2H2-type zinc finger motifs. Alternative splicing results in multiple transcript variants.

Recommended Dilutions

WB 1:500 - 1:2000

ELISA Recommended starting concentration is 1 µg/mL. Please optimize the concentration based on your specific assay requirements.

Immunogen Information

Gene ID

64288

Swiss Prot

Q96LW9

Immunogen

Recombinant protein (or fragment). This information is considered to be commercially sensitive.

Synonyms

ZNF323; ZNF310P; ZNF20-Lp; ZSCAN31

Contact



www.abclonal.com

Product Information

Source

Rabbit

Isotype

IgG

Purification

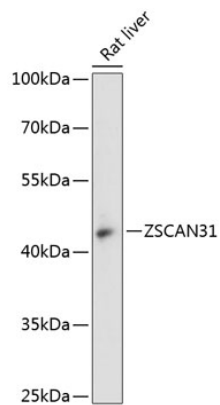
Affinity purification

Storage

Store at -20°C. Avoid freeze / thaw cycles.

Buffer: PBS with 0.01% thimerosal, 50% glycerol, pH7.3.

Validation Data



Western blot analysis of lysates from rat liver, using ZSCAN31 Rabbit pAb (A14290) at 1:3000 dilution.

Secondary antibody: HRP-conjugated Goat anti-Rabbit IgG (H+L) (AS014) at 1:10000 dilution.

Lysates/proteins: 25µg per lane.

Blocking buffer: 3% nonfat dry milk in TBST.

Detection: ECL Basic Kit (RM00020).

Exposure time: 90s.