

A14281

Leader in Biomolecular Solutions for Life Science



## ZFR Rabbit pAb

Catalog No.: A14281

### Basic Information

#### Observed MW

150kDa

#### Calculated MW

117kDa

#### Category

Polyclonal Antibody

#### Applications

WB, ELISA

#### Cross-Reactivity

Human, Mouse, Rat

### Background

This gene encodes an RNA-binding protein characterized by its DZF (domain associated with zinc fingers) domain. The encoded protein may play a role in the nucleocytoplasmic shuttling of another RNA-binding protein, Stau6 homolog 2, in neurons. Expression of this gene is regulated through alternative polyadenylation that mediates differential microRNA targeting. Elevated expression of this gene has been observed in human patients with pancreatic cancer and knockdown of this gene may result in reduced viability and invasion of pancreatic cancer cells.

### Recommended Dilutions

**WB** 1:500 - 1:2000

**ELISA** Recommended starting concentration is 1 µg/mL. Please optimize the concentration based on your specific assay requirements.

### Immunogen Information

#### Gene ID

51663

#### Swiss Prot

Q96KR1

#### Immunogen

Recombinant protein (or fragment). This information is considered to be commercially sensitive.

#### Synonyms

ZFR1; SPG71; ZFR

### Contact



[www.abclonal.com](http://www.abclonal.com)

### Product Information

#### Source

Rabbit

#### Isotype

IgG

#### Purification

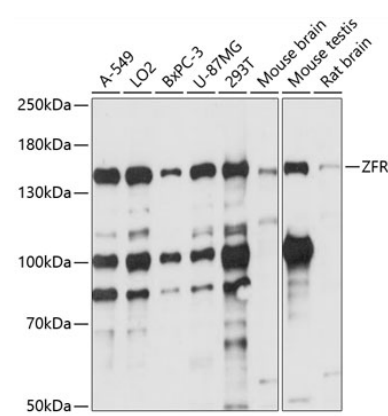
Affinity purification

#### Storage

Store at -20°C. Avoid freeze / thaw cycles.

Buffer: PBS with 0.01% thimerosal, 50% glycerol, pH 7.3.

# Validation Data



Western blot analysis of various lysates using ZFR Rabbit pAb (A14281) at 1:1000 dilution.  
Secondary antibody: HRP-conjugated Goat anti-Rabbit IgG (H+L) (AS014) at 1:10000 dilution.  
Lysates/proteins: 25µg per lane.  
Blocking buffer: 3% nonfat dry milk in TBST.  
Detection: ECL Basic Kit (RM00020).  
Exposure time: 15s.