

A14266

Leader in Biomolecular Solutions for Life Science



# DAZAP2 Rabbit pAb

Catalog No.: A14266

## Basic Information

### Observed MW

17kDa

### Calculated MW

17kDa

### Category

Polyclonal Antibody

### Applications

WB,ELISA

### Cross-Reactivity

Mouse

## Background

This gene encodes a proline-rich protein which interacts with the deleted in azoospermia (DAZ) and the deleted in azoospermia-like gene through the DAZ-like repeats. This protein also interacts with the transforming growth factor-beta signaling molecule SARA (Smad anchor for receptor activation), eukaryotic initiation factor 4G, and an E3 ubiquitinase that regulates its stability in splicing factor containing nuclear speckles. The encoded protein may function in various biological and pathological processes including spermatogenesis, cell signaling and transcription regulation, formation of stress granules during translation arrest, RNA splicing, and pathogenesis of multiple myeloma. Multiple transcript variants encoding different isoforms have been found for this gene.

## Recommended Dilutions

**WB** 1:500 - 1:2000

**ELISA** Recommended starting concentration is 1 µg/mL. Please optimize the concentration based on your specific assay requirements.

## Immunogen Information

### Gene ID

9802

### Swiss Prot

Q15038

### Immunogen

Recombinant protein (or fragment). This information is considered to be commercially sensitive.

### Synonyms

PRTB; DAZAP2

## Contact

 [www.abclonal.com](http://www.abclonal.com)

## Product Information

### Source

Rabbit

### Isotype

IgG

### Purification

Affinity purification

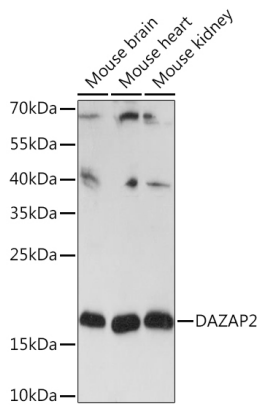
### Storage

Store at -20°C. Avoid freeze / thaw cycles.

Buffer: PBS with 0.01% thimerosal, 50% glycerol, pH7.3.

## Validation Data

---



Western blot analysis of various lysates using DAZAP2 Rabbit pAb (A14266) at 1:3000 dilution.

Secondary antibody: HRP-conjugated Goat anti-Rabbit IgG (H+L) (AS014) at 1:10000 dilution.

Lysates/proteins: 25 $\mu$ g per lane.

Blocking buffer: 3% nonfat dry milk in TBST.

Detection: ECL Basic Kit (RM00020).

Exposure time: 30s.