

A14237

Leader in Biomolecular Solutions for Life Science



# CREBBP Rabbit pAb

Catalog No.: A14237

2 Publications

## Basic Information

### Observed MW

300kDa

### Calculated MW

265kDa

### Category

Polyclonal Antibody

### Applications

WB, ELISA

### Cross-Reactivity

Mouse, Rat

## Background

Enables several functions, including DNA-binding transcription factor binding activity; TFIIB-class transcription factor binding activity; and disordered domain specific binding activity. Involved in several processes, including cellular response to virus; face morphogenesis; and negative regulation of interferon-beta production. Acts upstream of or within cellular response to hepatocyte growth factor stimulus; germ-line stem cell population maintenance; and regulation of gene expression. Located in chromatin and nucleus. Part of RNA polymerase II transcription regulator complex; histone acetyltransferase complex; and outer kinetochore. Is expressed in several structures, including alimentary system; embryo ectoderm; genitourinary system; heart; and skin. Used to study Rubinstein-Taybi syndrome; acute myeloid leukemia; autism spectrum disorder; and myelodysplastic syndrome. Human ortholog(s) of this gene implicated in Rubinstein-Taybi syndrome; acute lymphoblastic leukemia; and acute myeloid leukemia. Orthologous to human CREBBP (CREB binding protein).

## Recommended Dilutions

**WB** 1:500 - 1:2000

**ELISA** Recommended starting concentration is 1 µg/mL. Please optimize the concentration based on your specific assay requirements.

## Immunogen Information

### Gene ID

12914

### Swiss Prot

P45481

### Immunogen

Recombinant protein (or fragment). This information is considered to be commercially sensitive.

### Synonyms

CBP; KAT3A; CBP/p300; p300/CBP; CREBBP

## Contact



[www.abclonal.com](http://www.abclonal.com)

## Product Information

### Source

Rabbit

### Isotype

IgG

### Purification

Affinity purification

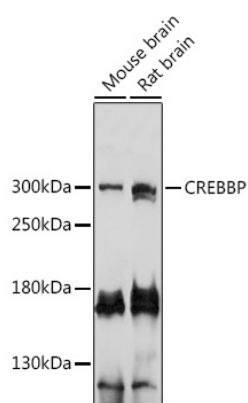
### Storage

Store at -20°C. Avoid freeze / thaw cycles.

Buffer: PBS with 0.02% sodium azide, 50% glycerol, pH 7.3.

## Validation Data

---



Western blot analysis of various lysates using CREBBP Rabbit pAb (A14237) at 1:3000 dilution.

Secondary antibody: HRP-conjugated Goat anti-Rabbit IgG (H+L) (AS014) at 1:10000 dilution.

Lysates/proteins: 25µg per lane.

Blocking buffer: 3% nonfat dry milk in TBST.

Detection: ECL Enhanced Kit (RM00021).

Exposure time: 10s.