

A14158

Leader in Biomolecular Solutions for Life Science



## HSP20/HSPB6 Rabbit pAb

Catalog No.: A14158

### Basic Information

#### Observed MW

17kDa/24kDa

#### Calculated MW

17kDa

#### Category

Polyclonal Antibody

#### Applications

WB,ELISA

#### Cross-Reactivity

Human,Mouse,Rat

### Background

This locus encodes a heat shock protein. The encoded protein likely plays a role in smooth muscle relaxation.

### Recommended Dilutions

WB 1:500 - 1:2000

### Immunogen Information

#### Gene ID

126393

#### Swiss Prot

O14558

#### Immunogen

Recombinant fusion protein containing a sequence corresponding to amino acids 1-160 of human HSP20/HSP20/HSPB6 (NP\_653218.1).

#### Synonyms

HEL55; Hsp20; PPP1R91; HSP20/HSPB6

### Contact



[www.abclonal.com](http://www.abclonal.com)

### Product Information

#### Source

Rabbit

#### Isotype

IgG

#### Purification

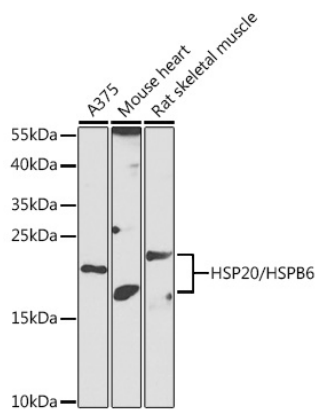
Affinity purification

#### Storage

Store at -20°C. Avoid freeze / thaw cycles.

Buffer: PBS with 0.02% sodium azide,50% glycerol,pH7.3.

## Validation Data



Western blot analysis of various lysates using HSP20/HSPB6 Rabbit pAb (A14158) at 1:1000 dilution.

Secondary antibody: HRP Goat Anti-Rabbit IgG (H+L) (AS014) at 1:10000 dilution.

Lysates/proteins: 25µg per lane.

Blocking buffer: 3% nonfat dry milk in TBST.

Detection: ECL Enhanced Kit (RM00021).

Exposure time: 90s.