

A14065

Leader in Biomolecular Solutions for Life Science



LEFTY2 Rabbit pAb

Catalog No.: A14065

Basic Information

Observed MW

41kDa

Calculated MW

41kDa

Category

Polyclonal Antibody

Applications

WB, ELISA

Cross-Reactivity

Human, Mouse, Rat

Background

This gene encodes a secreted ligand of the TGF-beta (transforming growth factor-beta) superfamily of proteins. Ligands of this family bind various TGF-beta receptors leading to recruitment and activation of SMAD family transcription factors that regulate gene expression. The encoded preproprotein is proteolytically processed to generate the mature protein, which plays a role in left-right asymmetry determination of organ systems during development. The protein may also play a role in endometrial bleeding. Mutations in this gene have been associated with left-right axis malformations, particularly in the heart and lungs. Some types of infertility have been associated with dysregulated expression of this gene in the endometrium. This gene is closely linked to both a related family member and a related pseudogene. This gene encodes multiple isoforms that may undergo similar proteolytic processing.

Recommended Dilutions

WB 1:500 - 1:2000

ELISA Recommended starting concentration is 1 µg/mL. Please optimize the concentration based on your specific assay requirements.

Immunogen Information

Gene ID

7044

Swiss Prot

O00292

Immunogen

Recombinant fusion protein containing a sequence corresponding to amino acids 57-366 of human LEFTY2 (NP_003231.2).

Synonyms

EBAF; LEFTA; TGFB4; LEFTYA; LEFTY2

Contact

 www.abclonal.com

Product Information

Source

Rabbit

Isotype

IgG

Purification

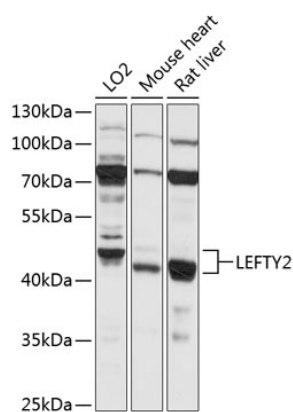
Affinity purification

Storage

Store at -20°C. Avoid freeze / thaw cycles.

Buffer: PBS with 0.02% sodium azide, 50% glycerol, pH 7.3.

Validation Data



Western blot analysis of various lysates using LEFTY2 Rabbit pAb (A14065) at 1:1000 dilution.
Secondary antibody: HRP-conjugated Goat anti-Rabbit IgG (H+L) (AS014) at 1:10000 dilution.
Lysates/proteins: 25µg per lane.
Blocking buffer: 3% nonfat dry milk in TBST.
Detection: ECL Basic Kit (RM00020).
Exposure time: 5s.