

A13933

Leader in Biomolecular Solutions for Life Science



SMC4 Rabbit pAb

Catalog No.: A13933

Basic Information

Observed MW

147kDa

Calculated MW

147kDa

Category

Polyclonal Antibody

Applications

WB, ELISA

Cross-Reactivity

Human

Background

This gene belongs to the 'structural maintenance of chromosomes' (SMC) gene family. Members of this gene family play a role in two changes in chromosome structure during mitotic segregation of chromosomes- chromosome condensation and sister chromatid cohesion. The protein encoded by this gene is likely a subunit of the 13S condensin complex, which is involved in chromosome condensation. A pseudogene related to this gene is located on chromosome 2.

Recommended Dilutions

WB 1:500 - 1:2000

Immunogen Information

Gene ID

10051

Swiss Prot

Q9NTJ3

Immunogen

A synthetic peptide corresponding to a sequence within amino acids 1-100 of human SMC4 (NP_001275682.1).

Synonyms

CAPC; CAP-C; SMC-4; SMC4L1; SMC4

Contact



www.abclonal.com

Product Information

Source

Rabbit

Isotype

IgG

Purification

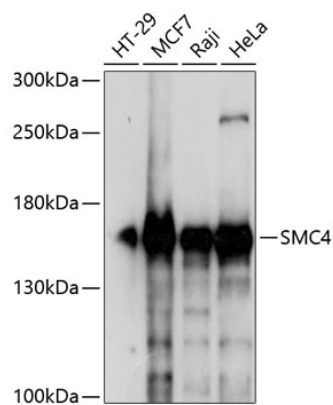
Affinity purification

Storage

Store at -20°C. Avoid freeze / thaw cycles.

Buffer: PBS with 0.01% thimerosal, 50% glycerol, pH 7.3.

Validation Data



Western blot analysis of various lysates using SMC4 Rabbit pAb (A13933) at 1:1000 dilution.
Secondary antibody: HRP Goat Anti-Rabbit IgG (H+L) (AS014) at 1:10000 dilution.
Lysates/proteins: 25µg per lane.
Blocking buffer: 3% nonfat dry milk in TBST.
Detection: ECL Enhanced Kit (RM00021).
Exposure time: 3s.